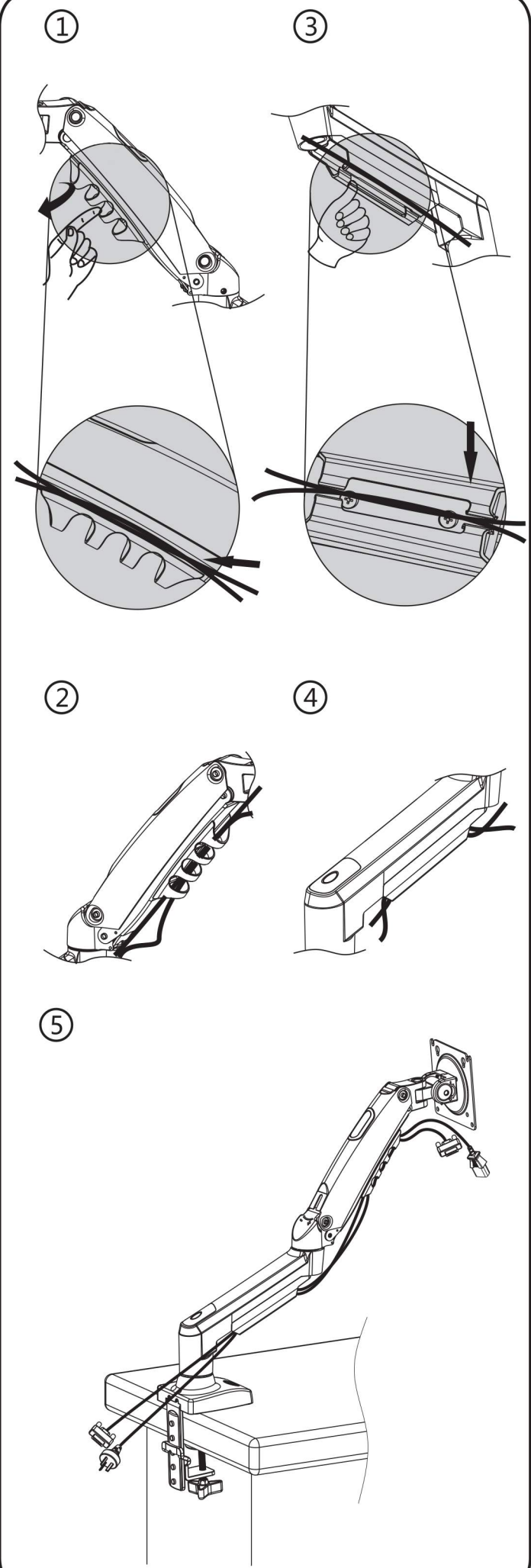
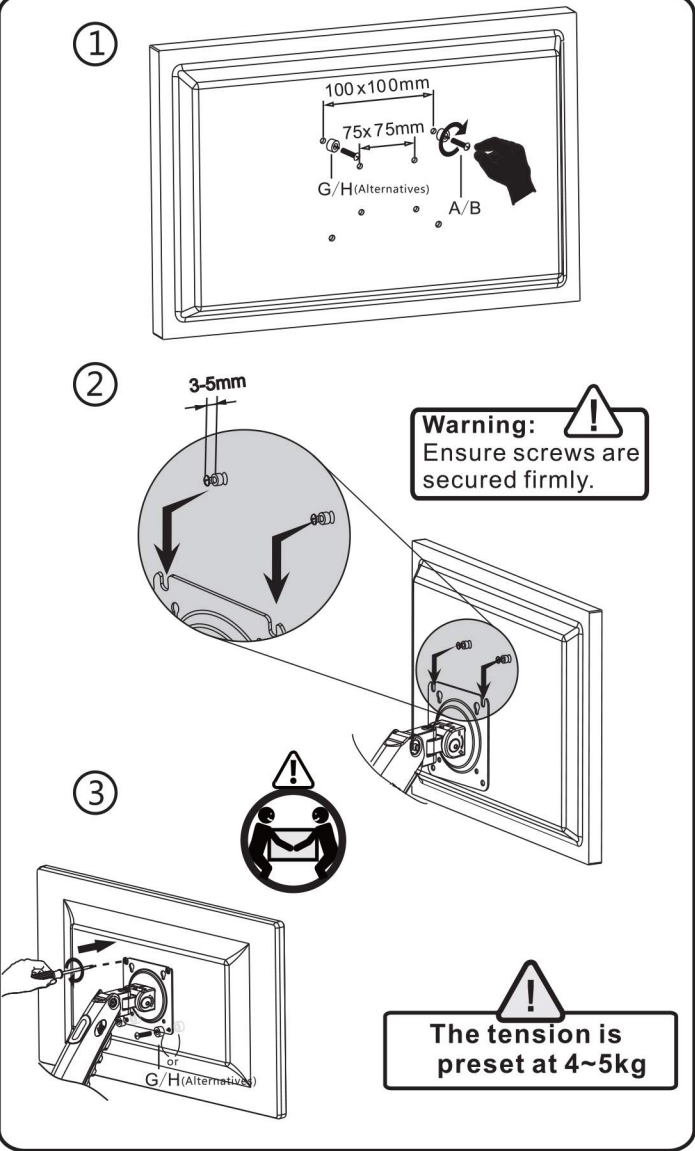


C、Power and Display Lines Installation

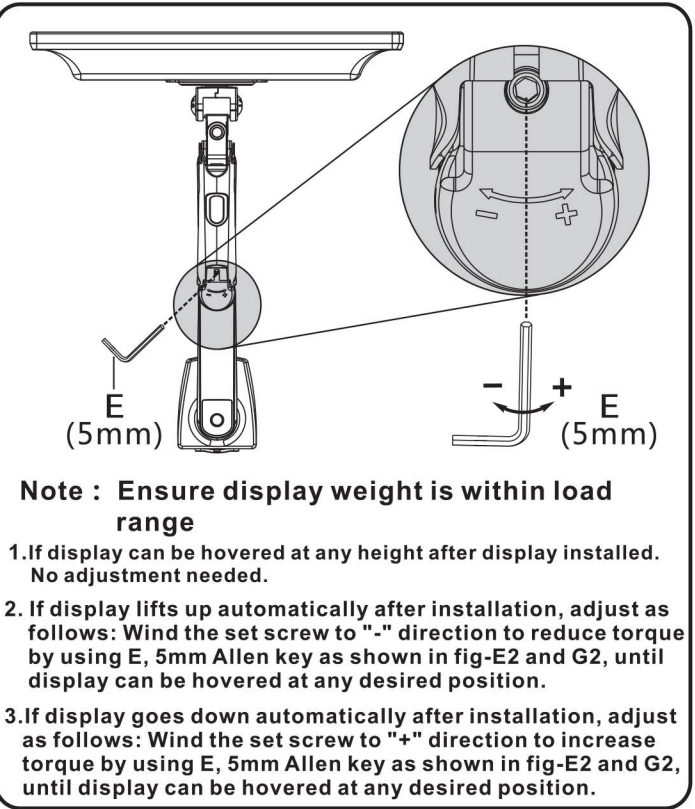


D、Display Installation

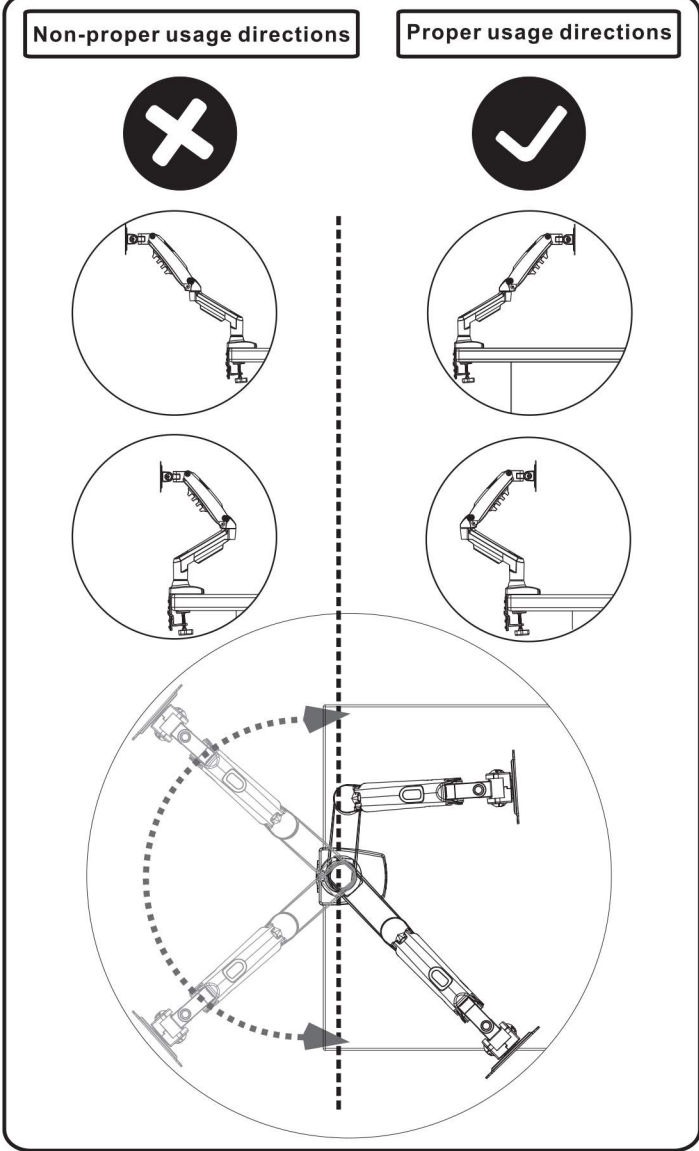


E、Torque Adjustment

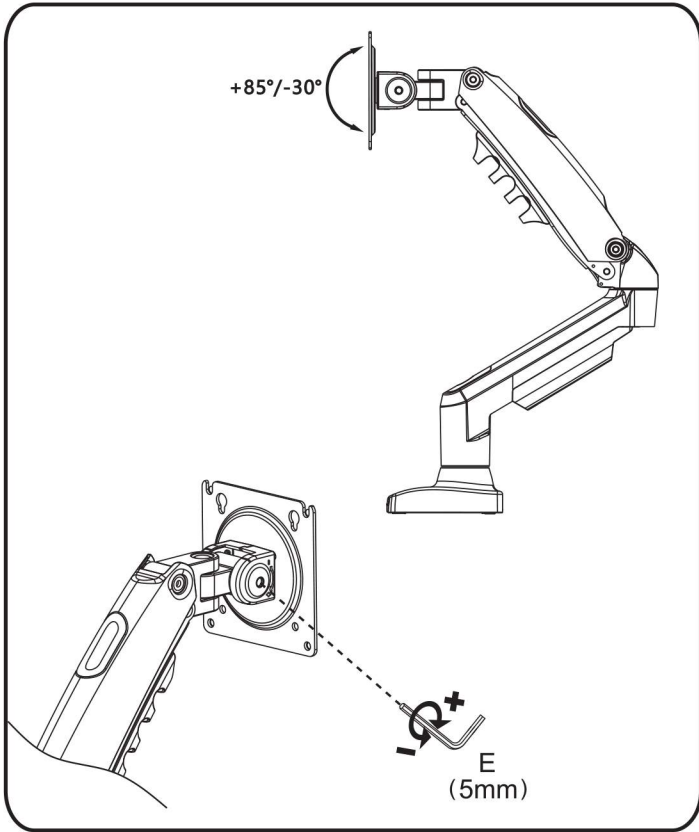
"+" : Torque increase direction shown fig-2
"-" : Torque decrease direction shown fig-2



F、Rotation Restriction



G、Display Adjustment



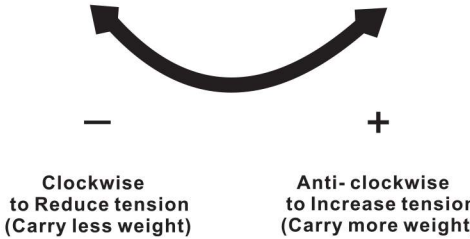
TENSION ADJUSTMENT
AFTER MOUNT INSTALLED



Do not adjust tension without putting on display.

- 1.Ensure display has been put onto mount.
- 2.Read your display packaging or manual to find out display net weight.
- 3.Ensure display net weight between 4.4-19.8 lbs(2-9 kg)

Adjustment sign



Warning !

