

F160

The TÜV Rheinland logo, featuring a stylized triangle and the text "TÜVRheinland CERTIFIED".

- | <h1 style="text-align: center;">F160</h1> <h2 style="text-align: center;">Table Edge Installation
or
Grommet Installation.</h2> | | | | |
|---|------------------------------|------------------------------|-----------------------|--|
| Part list | | | | |
| | | | | |
| | | | | |
| A

(M4x12)-8pcs | B

(M5x12)-8pcs | C

(M6x12)-6pcs | | |
| D

 | E

(4mm) | F
 | G

(5mm) | |

①

②

③

④

⑤

Female/Receptacle

Male/Plug

Warning:
Ensure screws are secured firmly.

Notes : Please instal “ Female/Receptacle ” at base & , “ Male/Plug ” to PC .

①

C

E
(4mm)

Warning:
Ensure screws are secured firmly.

②

③

10~90mm

④

⑤

⑥

Warning:
Ensure screws are secured firmly.

①

D

G

②

C

E (4mm)

③

Φ10mm-50mm

④

F

D

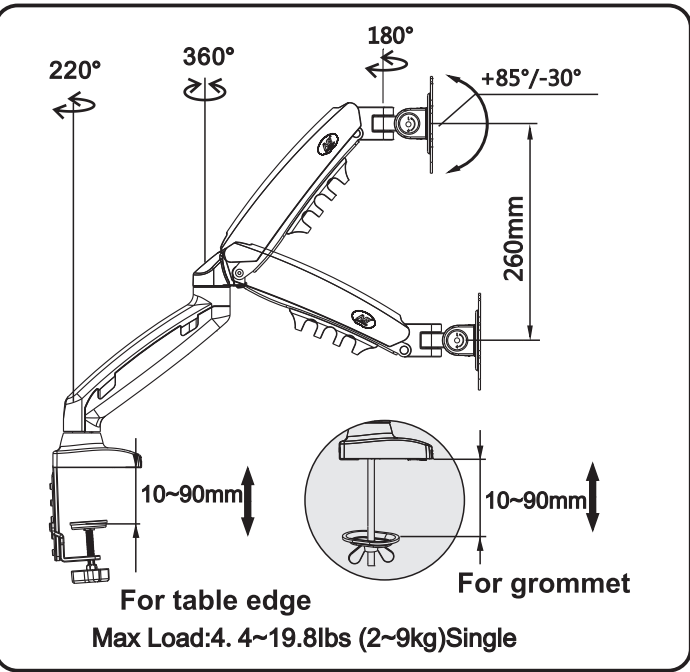
⑤

Warning: Ensure screws are secured firmly.

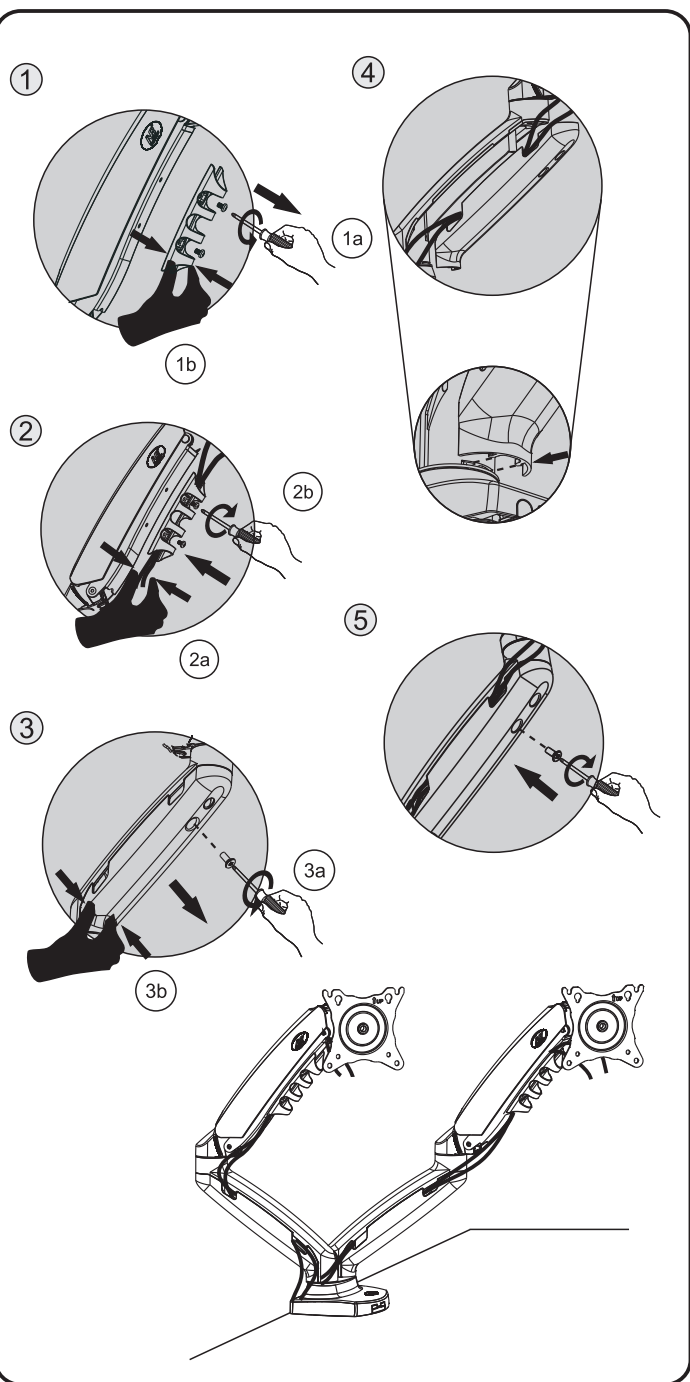
Proper usage directions (ok)

Non-proper usage directions (Not ok)

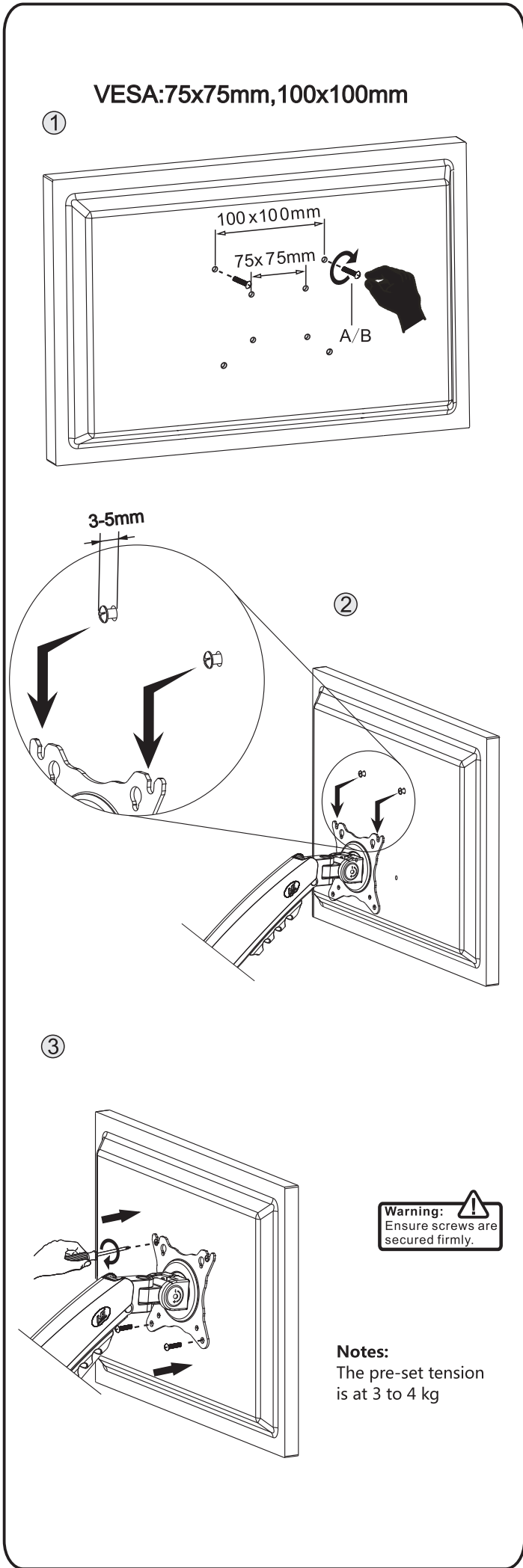
Full Adjustment After Installation



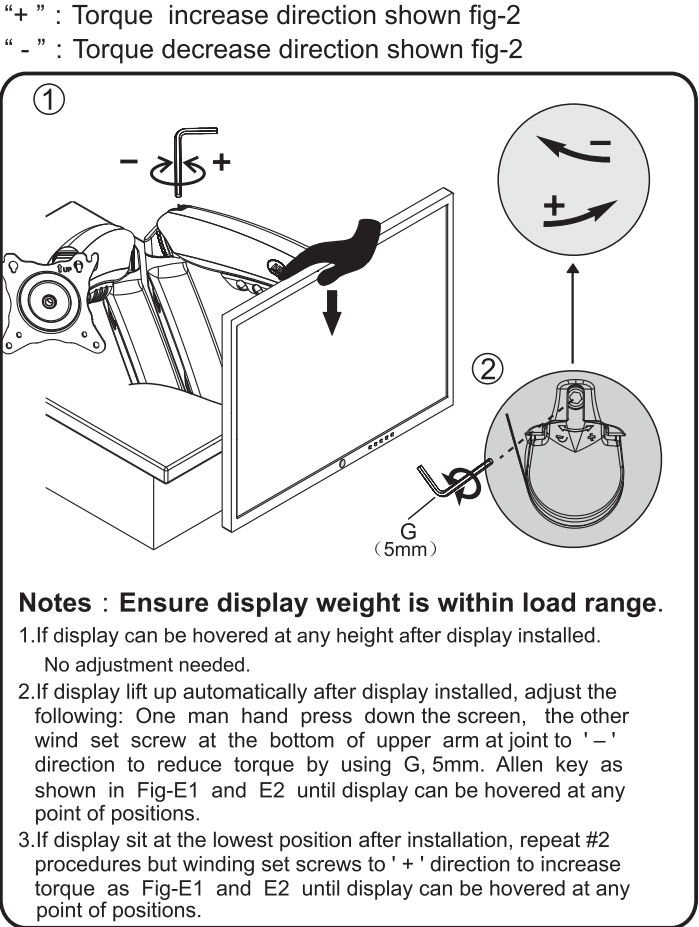
D、Power And Display Lines Installation



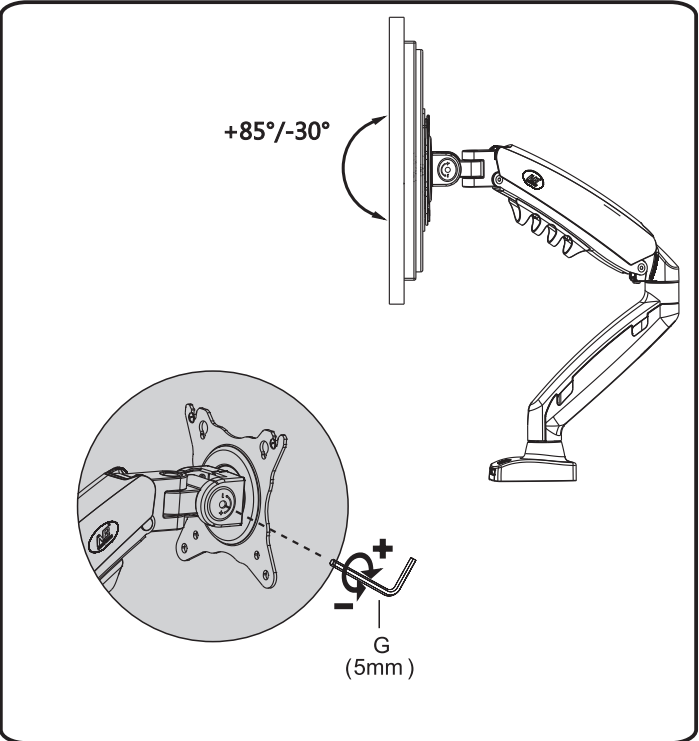
E、Display Installation



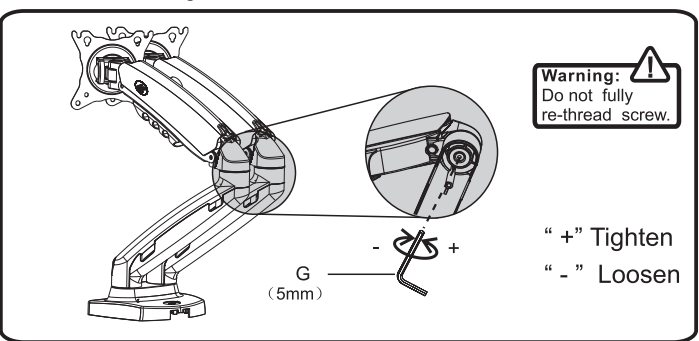
F、Torque Adjustment



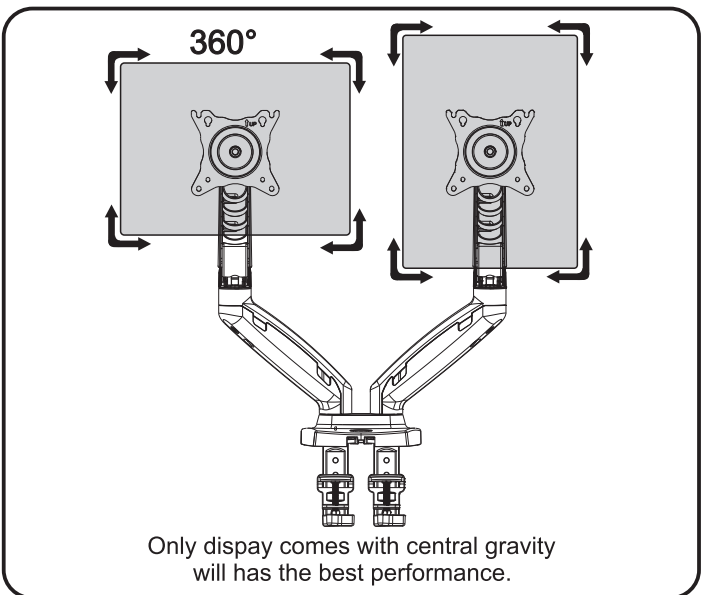
G、Setting Tilt Angle Position



H、Swivel Adjustment



I、Display Rotation



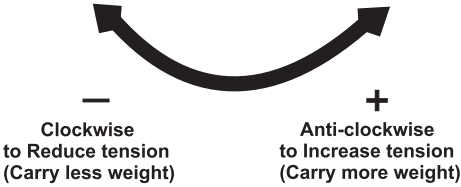
TENSION ADJUSTMENT AFTER WALL MOUNT INSTALLATION



Do not adjust tension without putting on display.

- 1.Ensure display has been put onto mount.
- 2.Read your display packaging or manual to find out display net weight.
- 3.Ensure display net weight between 4.4-19.8lbs (2.0-9.0kg).

Adjustment sign



Warning !



Kunshan Hongjie Electronics Co., Ltd
1050, Fu Chun Jiang Road,
Economic Development Zone,
Kunshan City, Jiangsu Province,
China. 215333
Mail: info@nbavmount.com
www.nbavmount.com