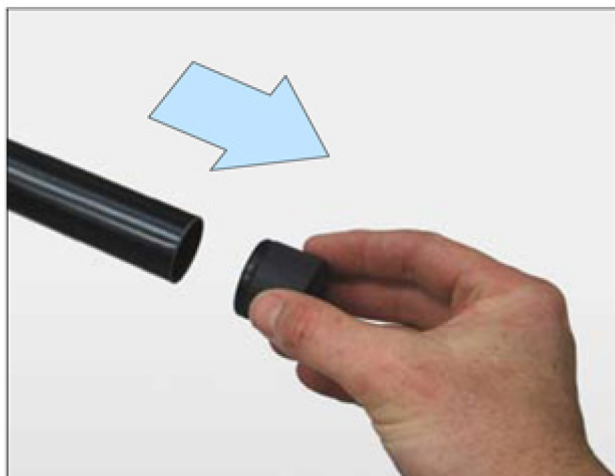


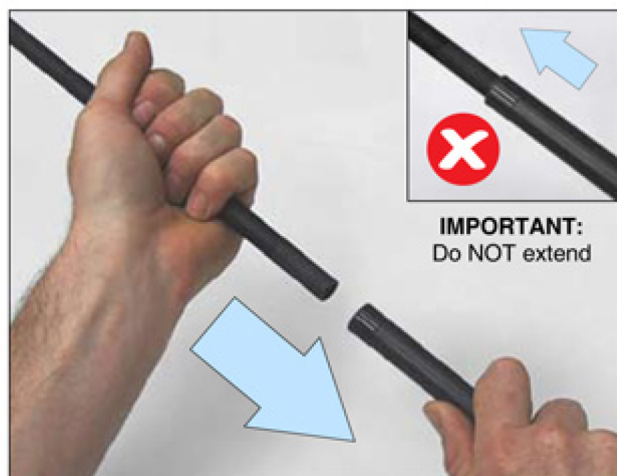
Please read the following steps carefully and follow the directions given to ensure trouble-free assembly of your Promotional Flag:



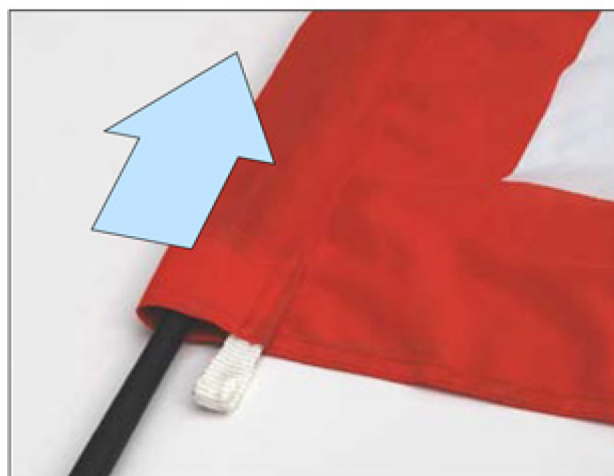
1. Take the pole from the carry bag and remove the plastic cap from the bottom of the pole



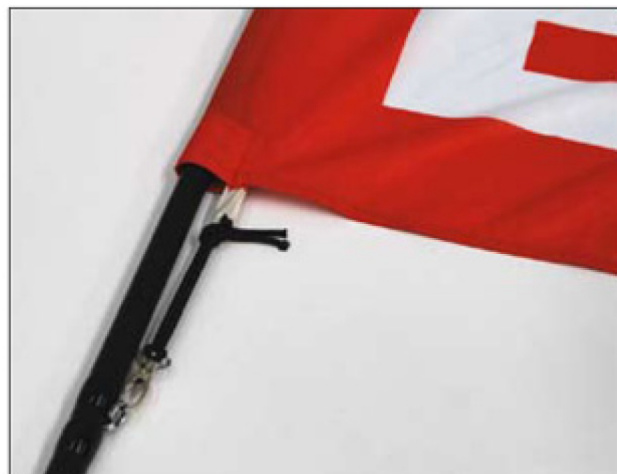
2. Remove the thinner sections of pole from inside the thicker one. **DO NOT** telescope the pole



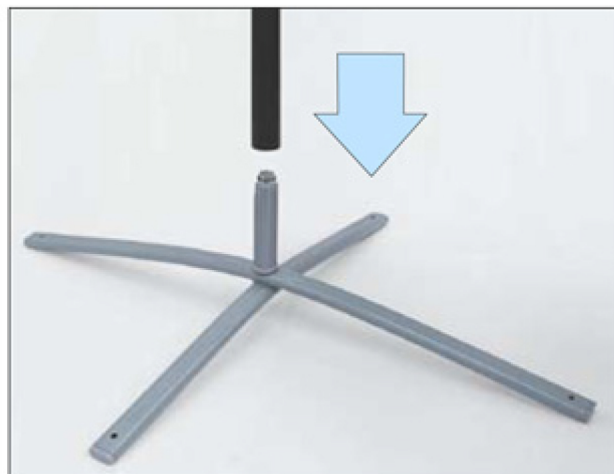
3. Assemble the pole as shown. **DO NOT** extend the pieces in a telescopic manner - each section must be inserted into the top end of the other



4. Once the pole is fully assembled insert the narrow end into the hem of the banner as shown. Ensure the tip of the pole reaches the end of the banner hem



5. Stretch the flag to the desired tension, then use the elastic cord and clip provided to fasten in position



6. Finally, unfold the base of the unit and slide the pole and banner assembly on as shown