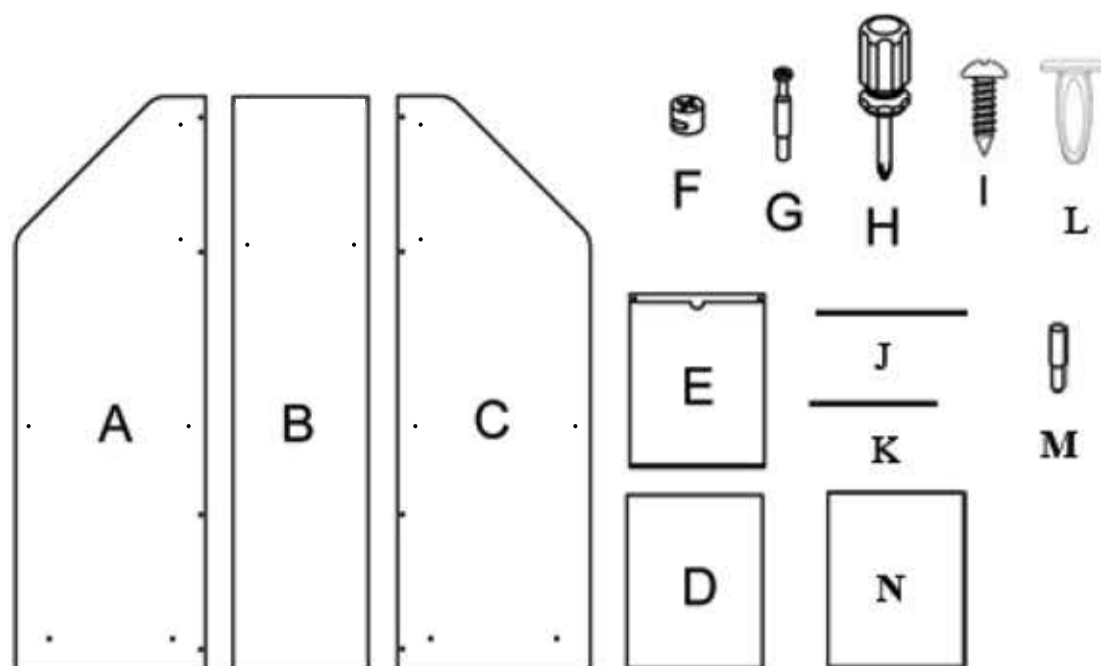


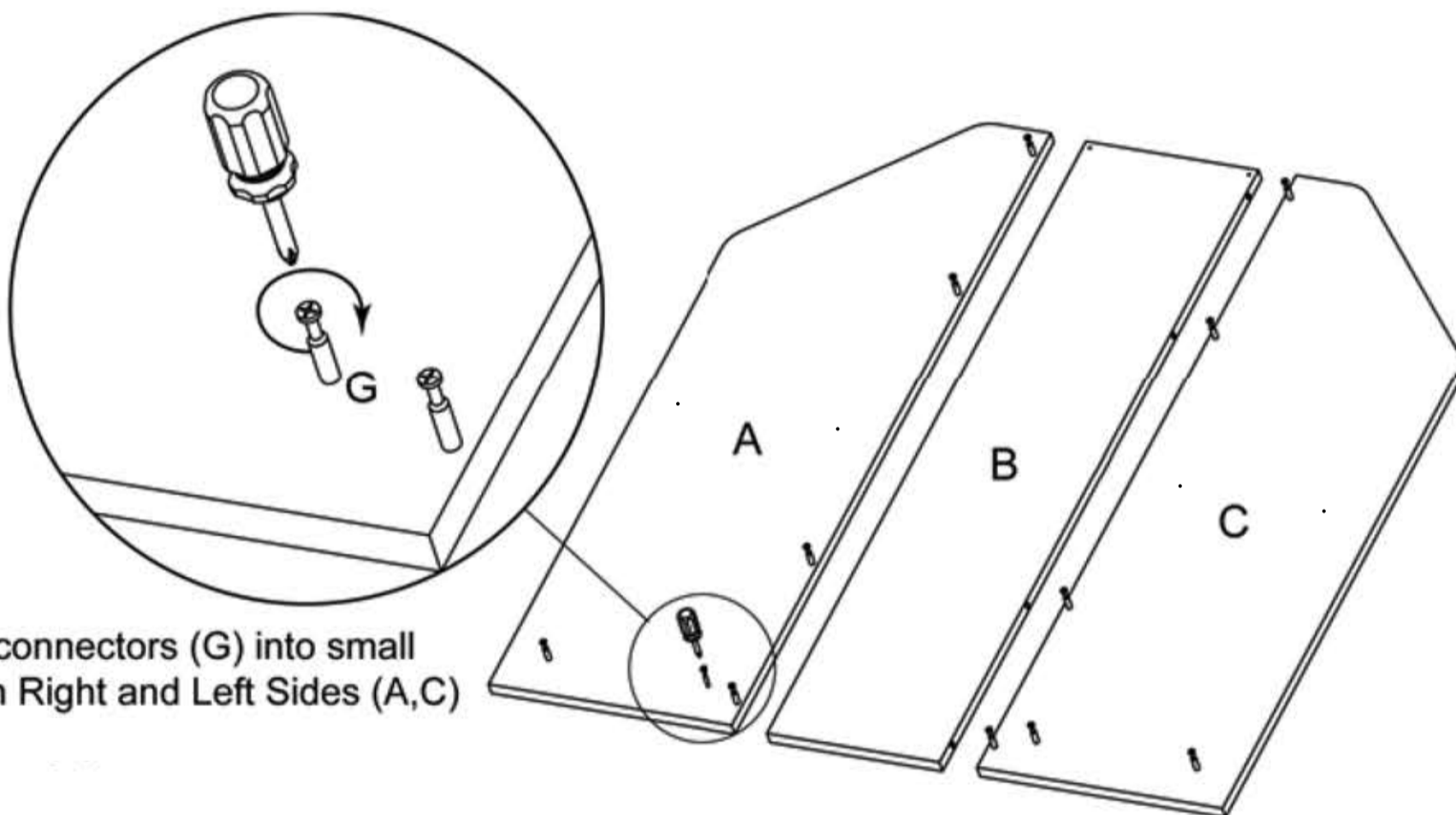
MAGRK Assembly Instructions

Parts List:

Right Side	A
Back	B
Left Side	C
Base	D
Acrylic Foldover	E
Cam	F
Connector	G
Screwdriver	H
Pan Head Screw	I
Side Rails	J
Back Rails	K
Clip	L
Shelf Support	M
Shelf	N



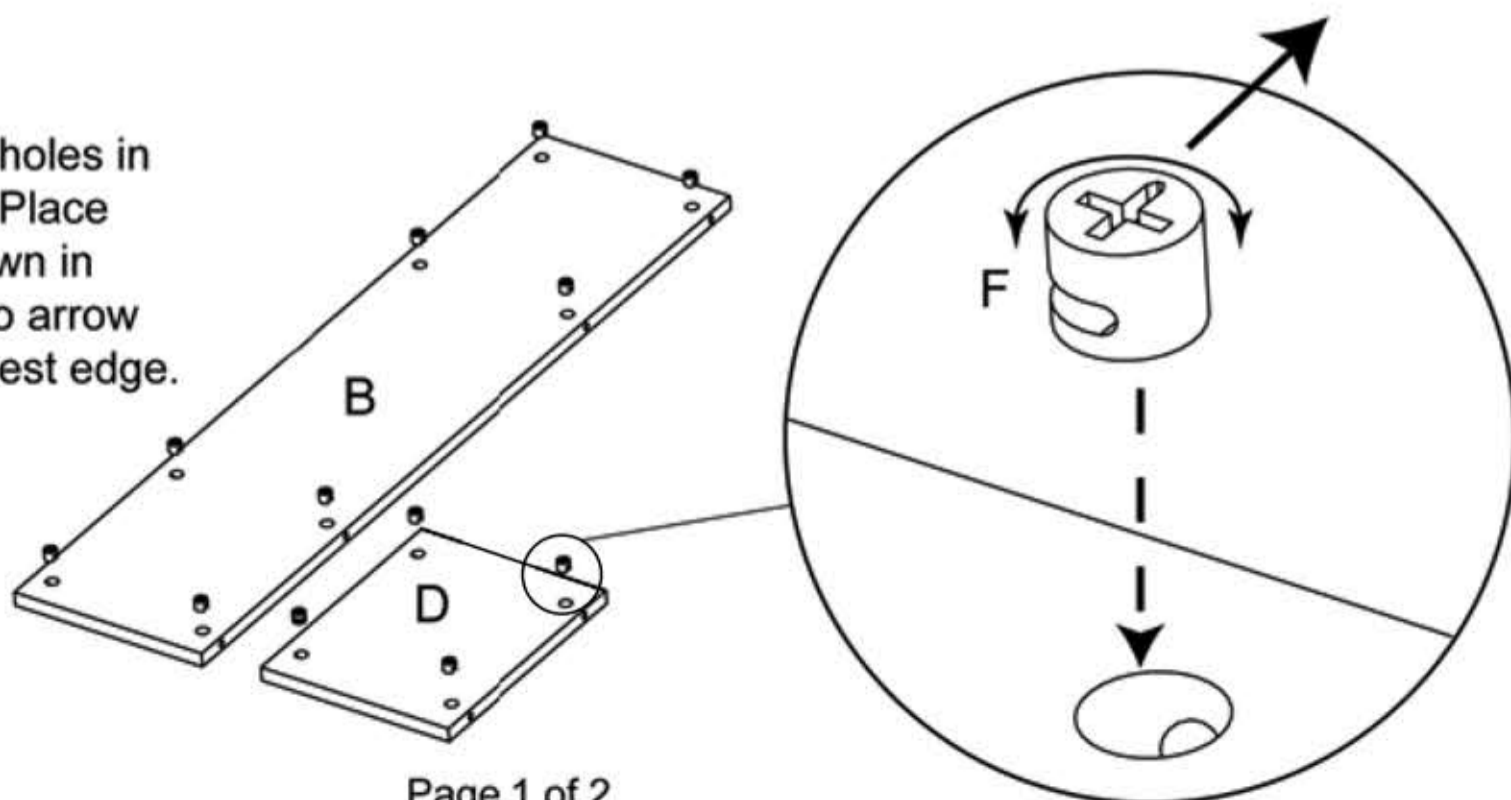
Step 1.



Screw connectors (G) into small holes in Right and Left Sides (A,C)

Step 2.

Place cams (F) in large holes in Back (B) and Base (D). Place cams (F) in hole as shown in detail. Rotate cam (F) so arrow is pointing towards nearest edge.

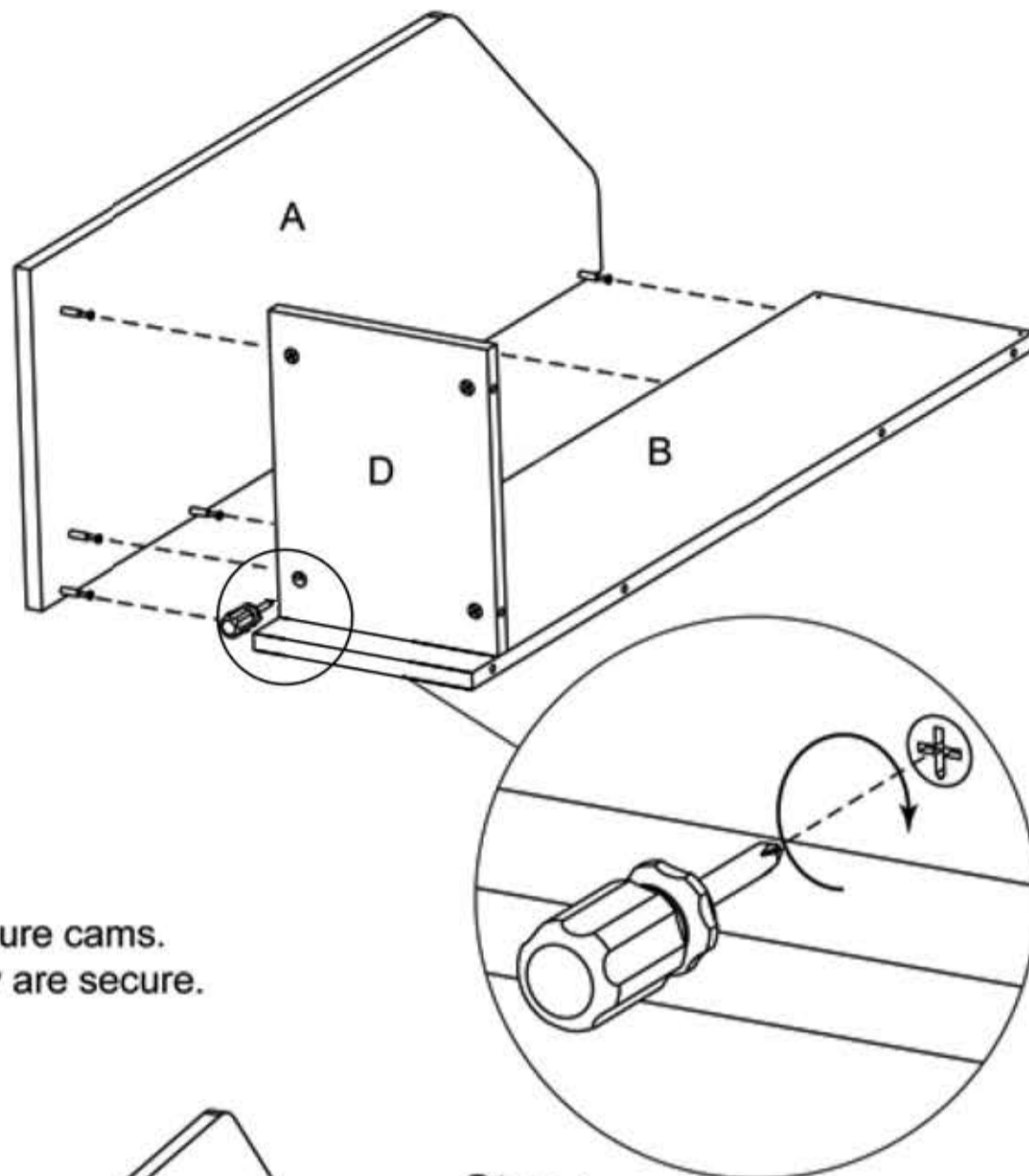


MAGRK Assembly Instructions continued

Step 3.

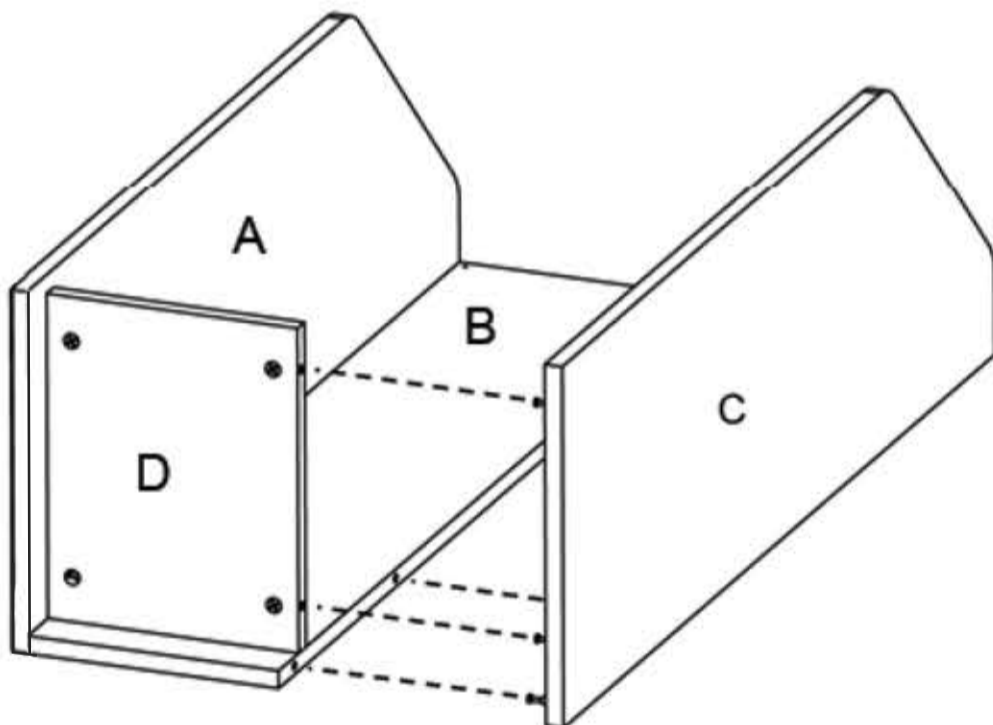
Install Right Side (A) to Board (B) and Bottom Shelf (D). Secure Cams

Using screwdriver rotate cam (F) one quarter turn clockwise to lock connector in place.



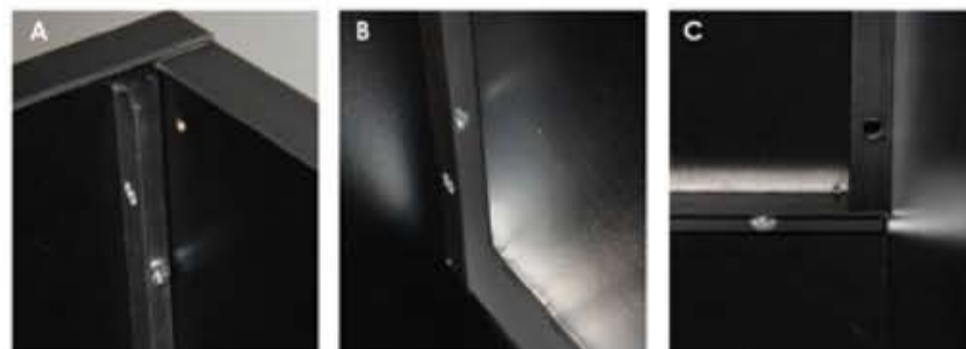
Step 4.

Fit Left Side (C) in place and secure cams. Check all cams (F) to insure they are secure.



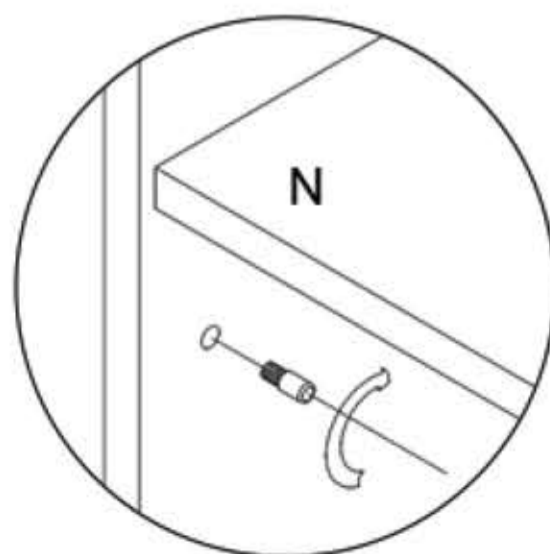
Step 5.

Side Rails(J) screwed into Sideboard(A,C), Back Rail(K) screwed into Backboard(B),



Step 6.

Place Acrylic(E) on the Rails with Clips (L,4/set)



Step 7.

Shelf supports(M) into small holes in Right and Left Sides, Using screwdriver rotate (M) to lock, Place shelf (N) on shelf supports.

