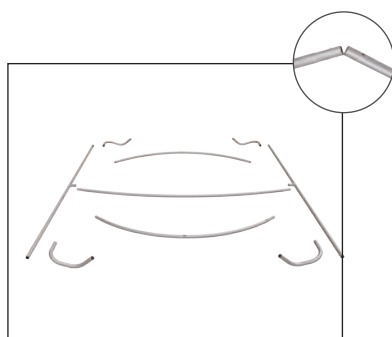
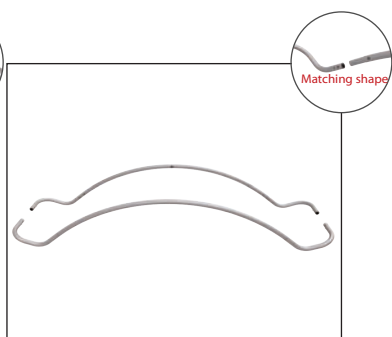


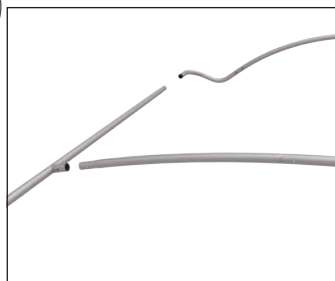
Waveline Exhibition Stand- Instructions



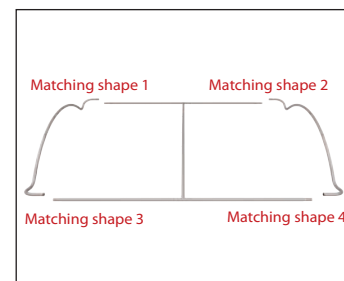
1. Assemble the two long curved and long straight sections (Connected with bungee cord). The frame is symmetrical. Either curved pole can be top or bottom.



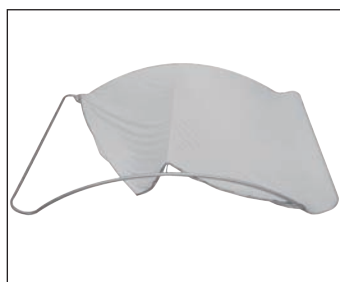
2. Connect corner sections to curved sections by matching the shape codes.



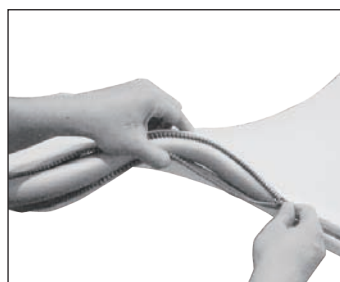
3. Make sure that the middle support is fitted into the frame.



4. Connect corner sections to straight sections by matching the shape codes.



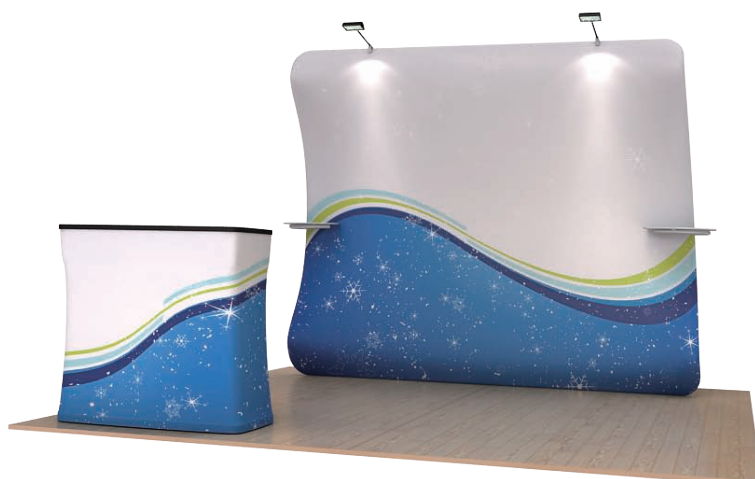
5. Unzip the fabric sleeve and lay the image face down. Slide the fabric sleeve onto frame.



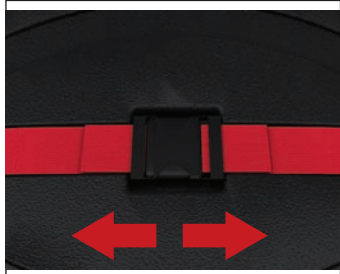
6. Zip the bottom edge of the fabric sleeve beyond the centre point as shown above. Zip the remaining side and bottom to meet at the corner, attach lights if any.



7. Attach lights as desired and tighten the clamp to hold into place.
WARNING! OVERTIGHTENING MAY CAUSE DAMAGE TO FABRIC IMAGE.



Case to Counter - Instructions



1. Lay the case flat on the floor with the wheels on the bottom and undo the straps.



2. Lift the lid off and remove the content of the case. Place the lid in position as this will become the base of the counter.



3. Insert the supplied support poles firmly into the holes of the lid.



4. Place the other part of the case on top of the support poles. Holes are located at the bottom for the poles to be inserted.



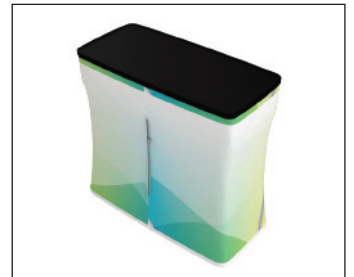
5. Fit the fabric over the counter, starting at the bottom and stretching it up over the top. Use the velcro to secure it in place.



6. Make sure that all wrinkles are out and the fabric looks straight.



6. Put the lid right on top and press to secure.



7. The zipper on the back is used to access storage.

