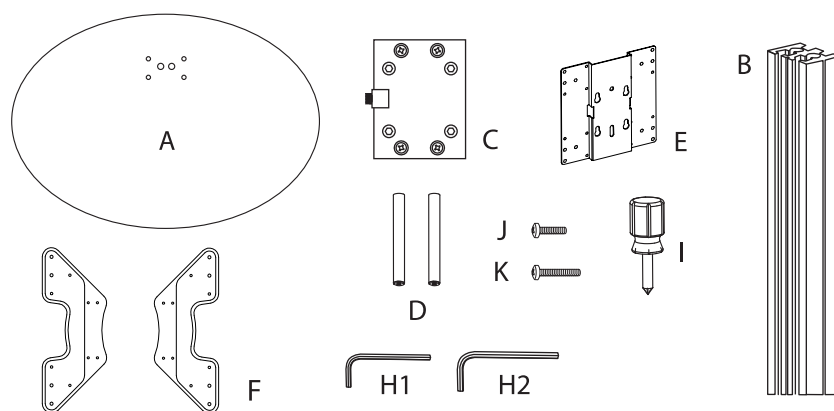
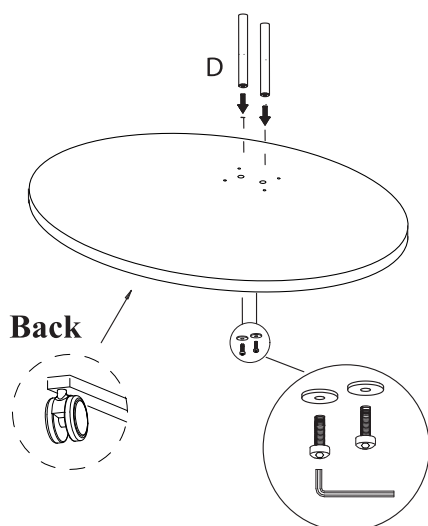


TVON5BWHL - Assembly Instructions

Thank you for purchasing the portable flat panel TV stand with wheels. This TV stand comes with VESA brackets designed to accommodate flat panel TVs from 17 to 60" diagonal, weighing up to 45kg. The unit comes with lockable castors that can be fixed to the base allowing for easy movement of the unit. No additional tools are required for assembly.



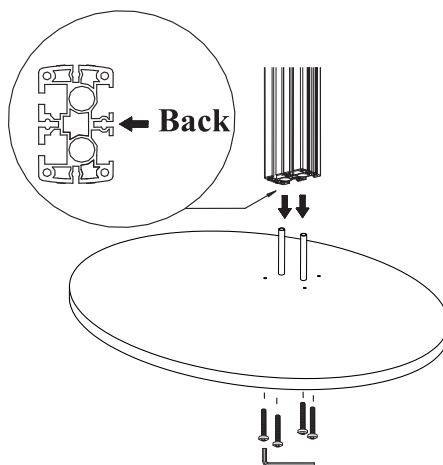
Part	ID	Qty
Base	A	1
Pole	B	1
Bracket	C	1
Support shafts	D	2
200x200 VESA	E	1
400x400 VESA	F	2
Allen Key	H1	1
Allen Key	H2	1
Screwdriver	I	1
Screw M8 x 20mm	J	2
Screw M6 x 60mm	K	4



Step 1.

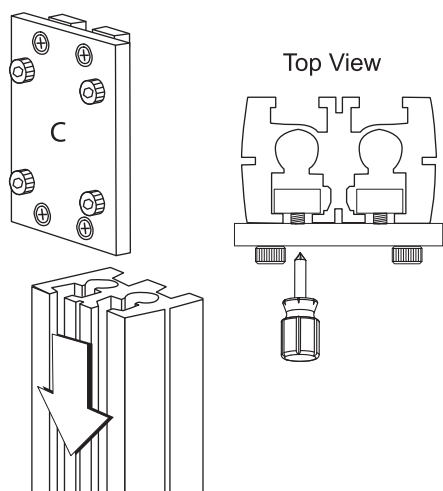
Attach the wheels to the base by screwing them into the metal base frame

2pcs of support shafts (D) insert into the bottom holes of Base (A), fixed with M8 x 20mm screws by allen key (H2)



Step 2.

Insert the Pole (B) into the support shafts (D), bottom fitted with M6 x 60mm screws by Allen key (H2)



Step 3.

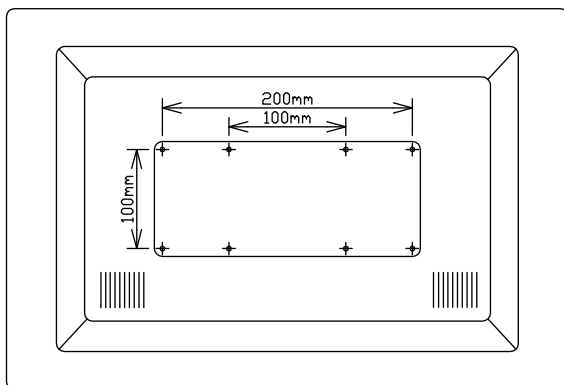
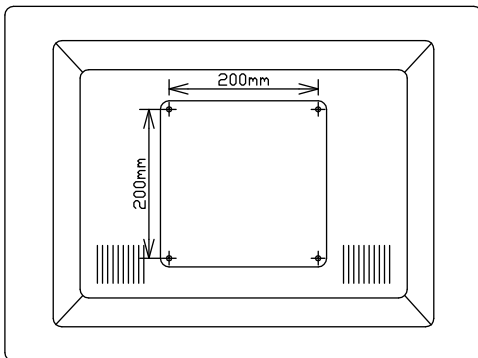
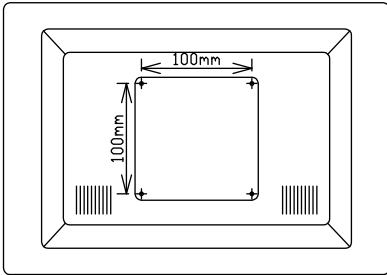
- Loosen the 4 Philips head screw in the front of the bracket (C) enough so that the attached block allows sliding into the poles channel (B) as the picture shown.
- Adjust the height of bracket (A) to your desired height
- Tighten the 4 Philips head screws in the front of the bracket (C) locking it in position.

200 x 200 VESA Bracket Assembly

This VESA bracket can be fitted to almost all of the major Plasma or LCD with 100*100 to 200*200 standard holes patterns, and it is easily to be assembly with screws holes of the back of your tv,diagonal weighing up to 32kg

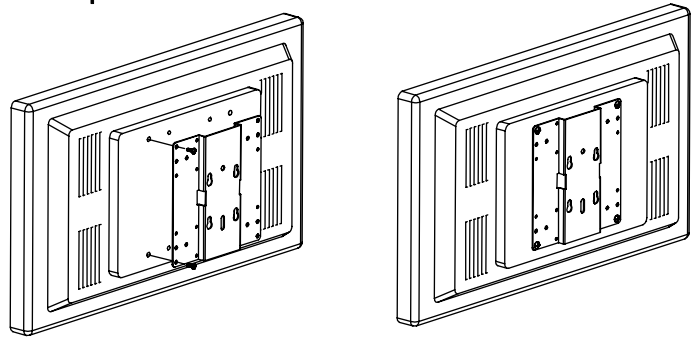
Step.1

The pictures show the standard holes patterns.



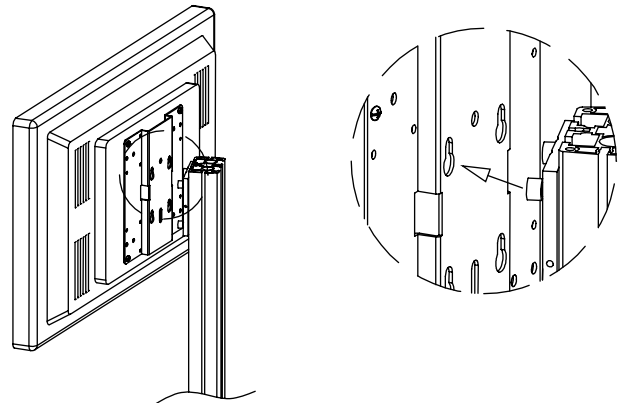
Step 2.

Align the VESA bracket (E) keyholes with the screw holes on the back of TV, use the Allen key to tighten with the screws provided.



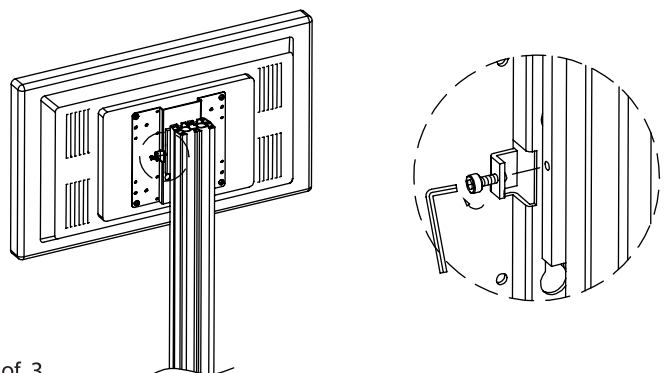
Step 3.

Take away the side clamp from the plate on column by loosen the screws. Once the TV assembled with VESA bracket, align the back of the tv with the screws on the plate, as picture shown, and align the holes, then slide it down to place.



Step 4.

Return the side clamp to the side hole of VESA, tighten clamp locking the VESA in position with the Allen Key (H1).

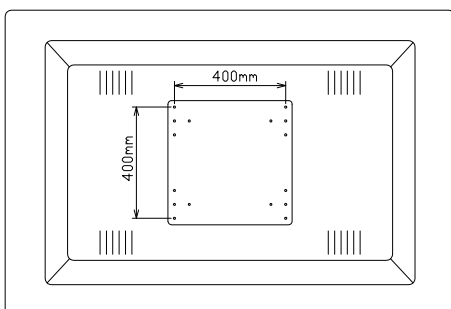
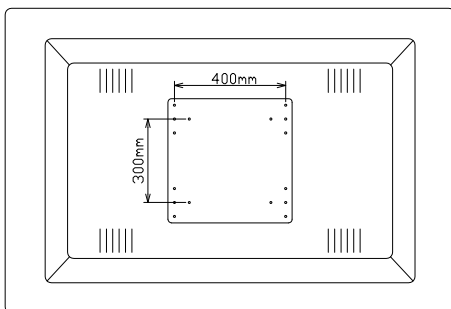
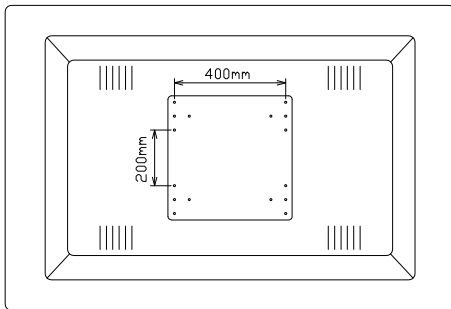
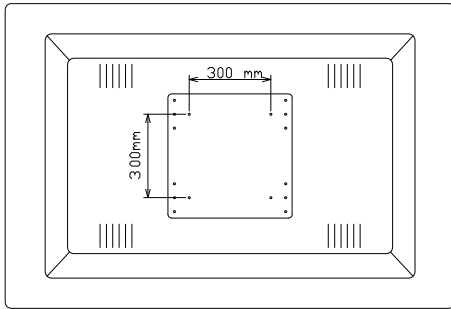


400 x 400 VESA Bracket Assembly

This VESA bracket can be fitted to almost all of the major Plasma or LCD with 100*100 to 400*400 standard holes patterns, and it is easy to assemble with screws using the holes on the back of your TV. It supports TV weighing up to 36kg

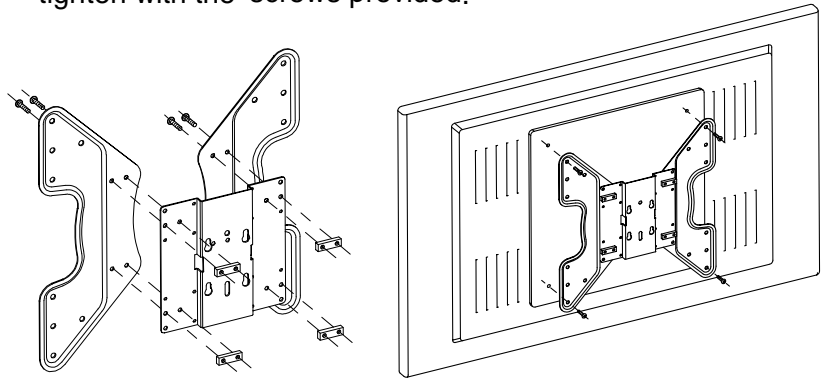
Step 1.

The pictures show the standard holes patterns.



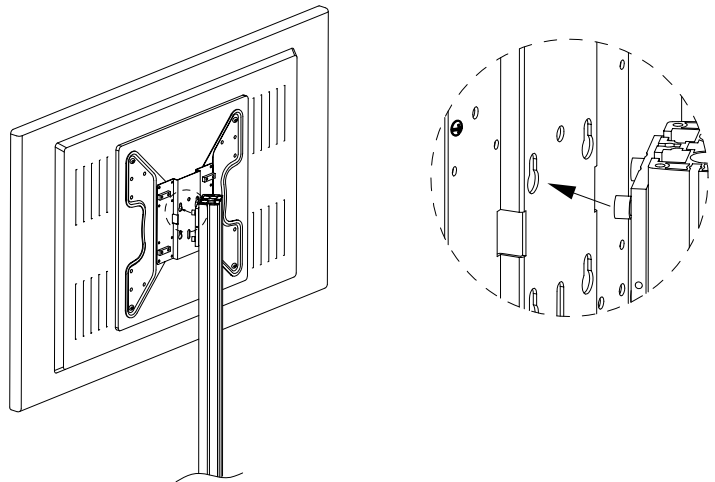
Step 2.

Align the VESA bracket keyholes with the holes of the VESA wings, use the Allen key to tighten with the screws provided, and then Align the keyholes of the assembled 400*400 VESA with the screws holes on the back of TV, use the Allen key to tighten with the screws provided.



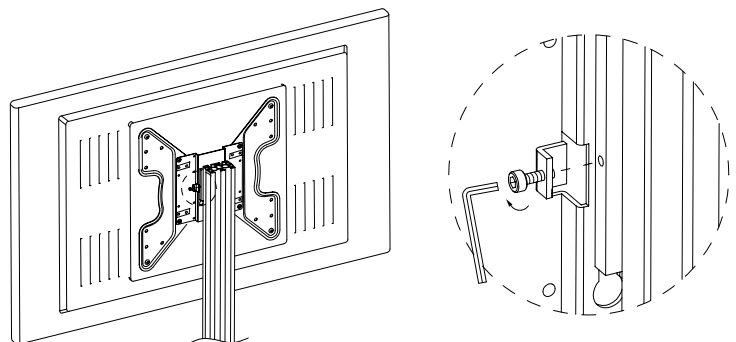
Step.3

As the assembling steps of 200*200VESA shown on page 2.

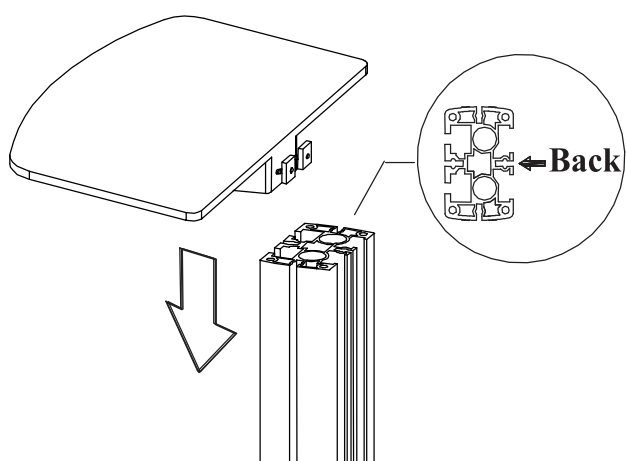


Step 4.

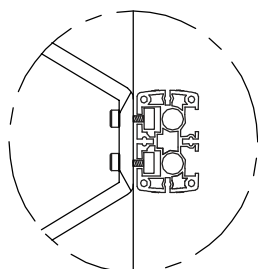
As the assembling steps of 200*200VESA shown on page 2.



PORTABLES SHELVES

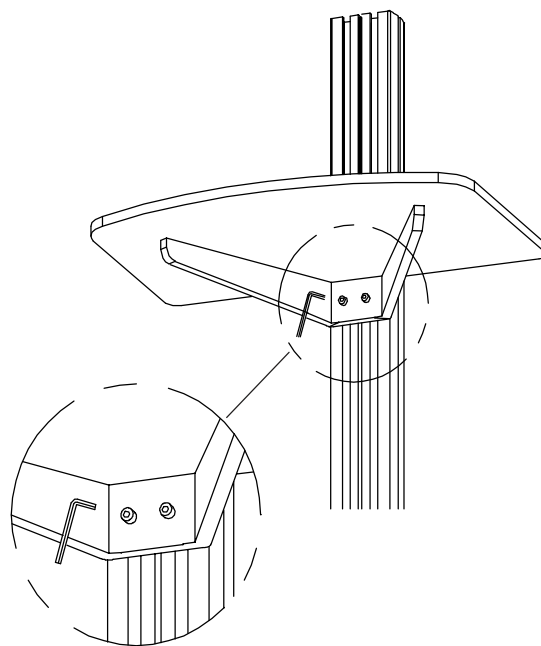


Bottom View



Step 1.

Slide AV Shelves through top into desired position.



Step 2.

When shelves are in desired position, tighten each screw with an Allen wrench.

