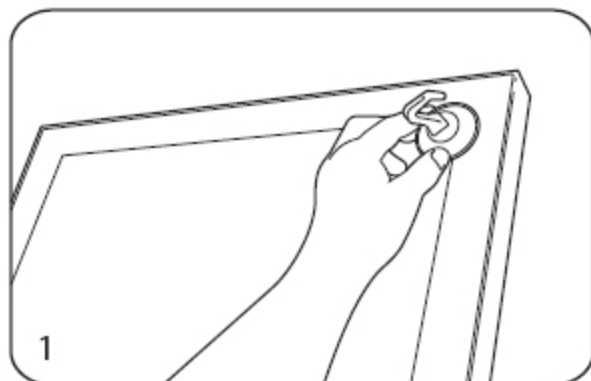


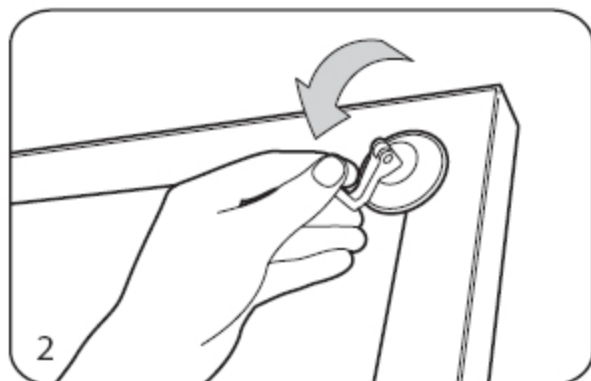
- **WARNING:** Always ensure power is OFF during all maintenance procedures
- All lightboxes **MUST** be securely fastened to wall or other surface
- Unless otherwise stated all models are strictly **INTERIOR** use only

## Graphic Replacement Procedure

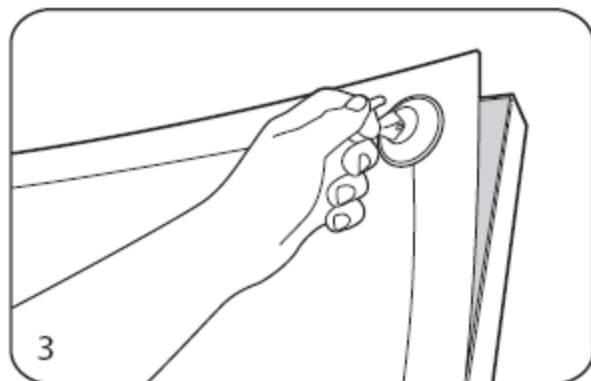
Lightboxes generate heat during normal operation. Appropriate care should be taken during the placement and removal of graphics \*



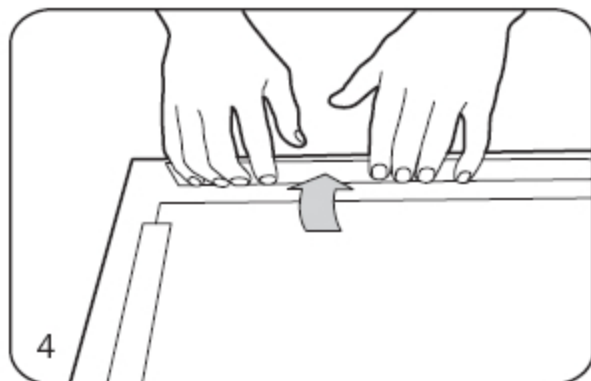
1 Place access suction cup on top corner of the front panel



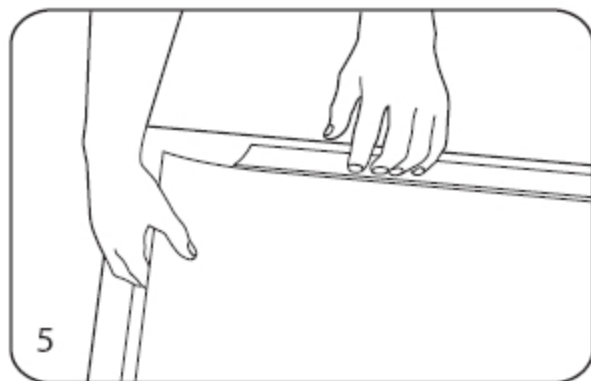
2 Lock suction cup by pushing firmly down on the handle



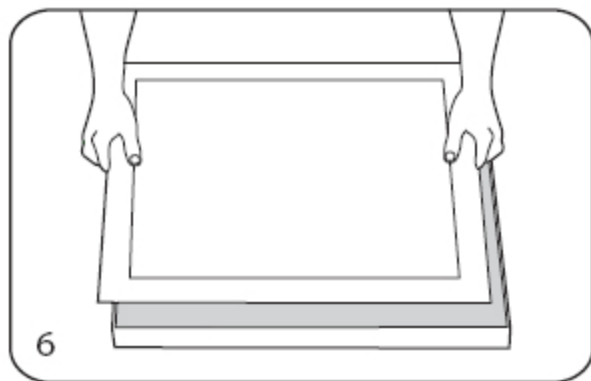
3 Carefully lift off the acrylic panel by pulling the suction cup



4 Lay panel face down and fold back the magnetic strips



5 Remove old graphic then insert and centre the new graphic



6 Refit the acrylic panel ensuring it sits securely in the frame

**WARNING:** Failure to correctly refit the acrylic face (step 6) may result in damage or injury

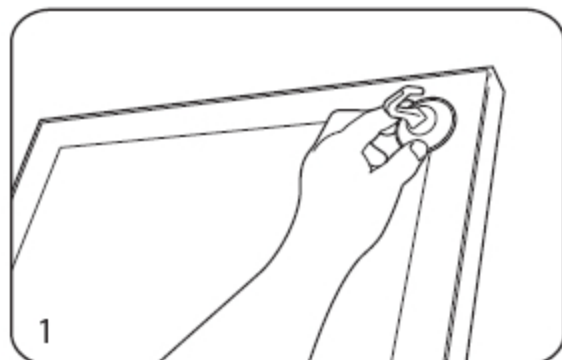
## Cleaning

1. The face of the lightbox should be wiped with a damp cloth. A small amount of thinners can be used to remove any grease present, before a final clean using a non-streak cleaning fluid.
2. Dust may be attracted to the lightbox due to static electricity, this can be removed using Reiniger + Pfleger: Kunst Stoff, available from Slimline Warehouse
3. Graffiti should be removed using a solvent based product, care being taken to avoid any mechanical abrasion.

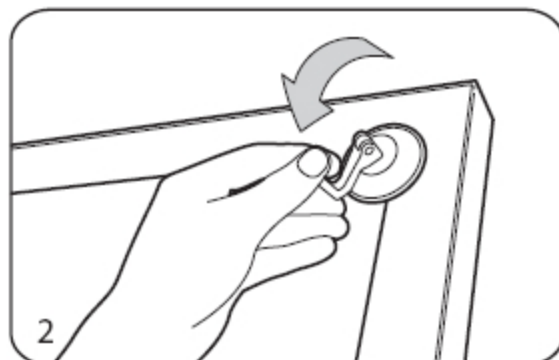
## Flourescent Lamp Replacement Procedure

Installation and Maintenance of all lightboxes must be undertaken by a qualified electrician \*

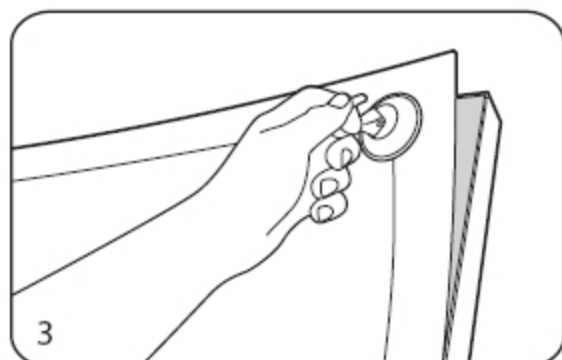
It is advised that failed lamps be promptly replaced in order to avoid damage to the units electrical components.



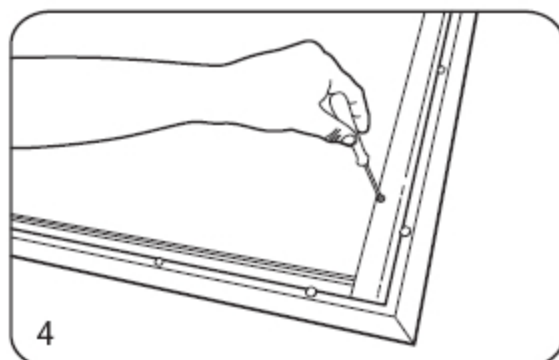
1 Place access suction cup on top corner of the front panel



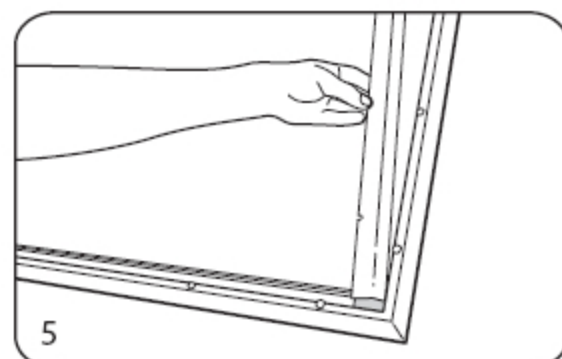
2 Lock suction cup by pushing firmly down on the handle



3 Carefully lift off the acrylic panel by pulling the suction cup



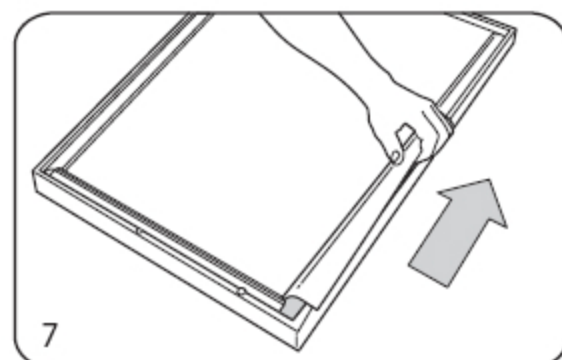
4 Unscrew top and bottom of the aluminium protection cover



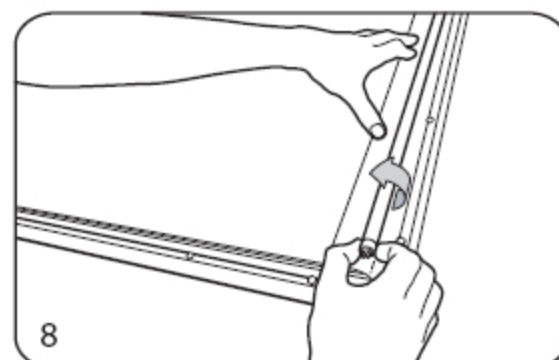
5 Once loose carefully remove aluminium protection cover



6 Using fingers lift the bottom corner of plastic diffusion sheet



7 Fully untuck diffusion sheet by running fingers beneath it



8 Hold diffusion sheet and twist flourescent tube to release

\* Slimline Warehouse accepts no responsibility for injuries or damages sustained during installation or maintenance of its products.