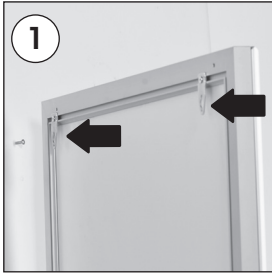
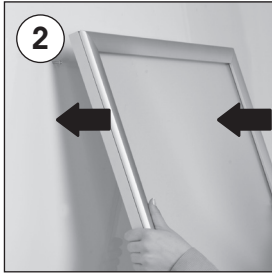


Installation Instructions

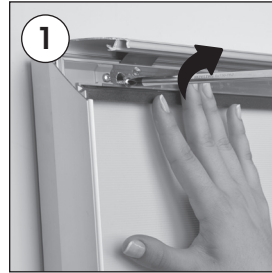
LOCKABLE WEATHERPROOF SMART LEDBOX SINGLE SIDED



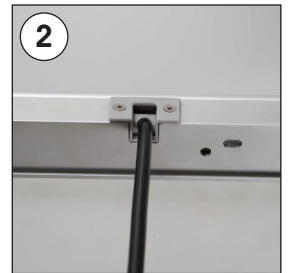
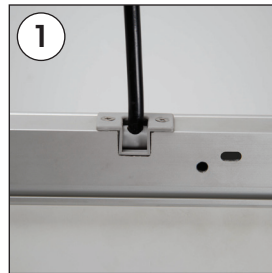
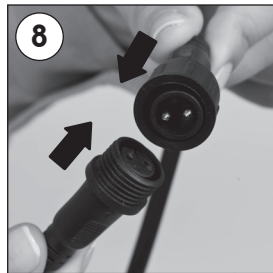
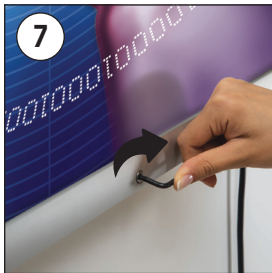
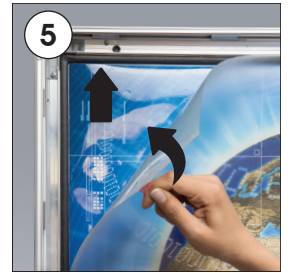
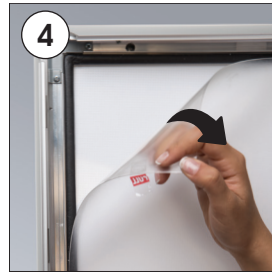
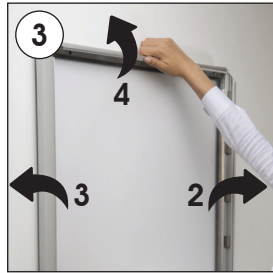
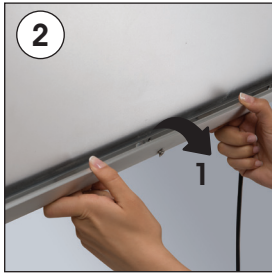
Hanger mounting



Landscape or portrait positions



Screw & anchor mounting



Each product package includes

- 1 x PET cover
- 2 x Hanger
- 1 x 3 allen key
- 4 x Screw
- 4 x Anchor
- 1 x Power Adapter AC100-240V-DC12V-3A (Weatherproof)
- 1 x AU Plug (Weatherproof)

Mobile cable outlet, from the edge and from the back of the aluminum box.

Caution !

- 1- Do not step on the light panel nor place the heavy object on the light panel.
- 2- Do not pull the cable with excessive force.
- 3- Use correct capacity and voltage of D.C. power supply.
Failure to observe this instruction could result in breakdown.
- 4- Do not touch the light panel or electrical devices with wet hand.
Failure to observe this instruction could result in electrical shocks and severe injuries.
- 5- Do not subject this light panel to outdoor, high humid and vaporized area.
Failure to observe this instruction could result in breakdown.
- 6- Keep this out of the direct rays of the sun.
Failure to observe this instruction could result in color changes of acrylic plate.
- 7- Keep away from fire or severe hot place. Acceptable ambient temperature is max.35°C
Failure to observe this instruction could result in shorten the life time and degradation of brightness of LED light source.

