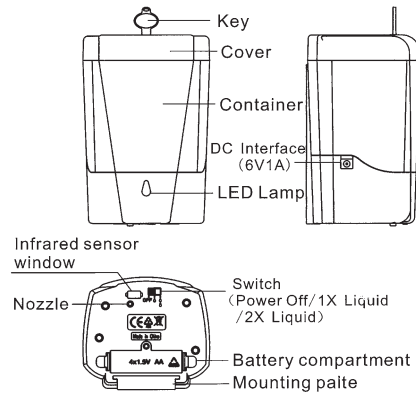


## AUTOMATIC SOAP DISPENSER INSTRUCTIONS



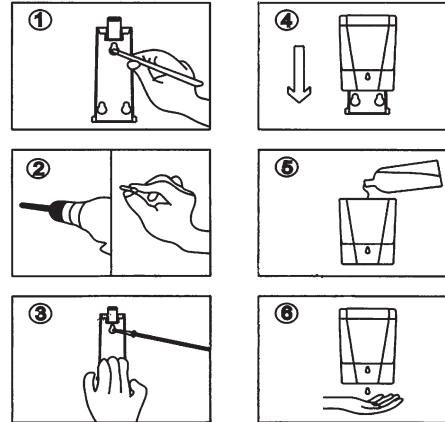
### SPECIFICATION

SKU.	ATSD600
OUTER SIZE	L110*W100*H165MM
CAPACITY	700mL
DROP VOLUME	0.7 or 1.4mL
WEIGHT	480g
MATERIAL	ABS, PC
BATTERY	AA Batteries

### TECHNICAL PARAMETER

INPUT VOLTAGE	DC6V
STATIC CURRENT	50uA
WORKING CURRENT	300mA
POWER	1.8W
EFFECT DISTANCE	0-8CM

### INSTALLATION AND USE



1. Use the mounting plate as a template to mark the positions. (Figure 1)
2. Drill three 5mm holes and insert the anchors into the holes. (Figure 2)
3. Fasten the mounting plate on the wall with the provided screws. (Figure 3)
4. Slide the dispenser in the mounting plate. (Figure 4)
5. Insert 4pcs batteries into the battery compartment with proper polarity as shown on the compartment. (Alkaline battery is recommended).
6. Open the cover and fill in the soap to the container. (Figure 5)
7. Put your hand 3-8cm under the sensor, and let the dispenser start working continuously until liquid soap comes out from the nozzle (figure 6). (When you use the dispenser for the first time, there will be some air in the pump. You need to work the dispenser several times until liquid soap drops down.)

### FEATURES & INSTALLATION NOTES

1. Do not install the dispenser above the Mirror surface or above flowing water.
2. Do not install the dispenser with less than 2inch(50cm) height beneath the table.
3. This soap dispenser is suitable for soap liquid and gel hand sanitizer, and it may cause the dispenser to not work properly if using other liquid.
4. The IR sensor is at the base of the dispenser. The effect range is from 3-8cm underneath the sensor.
5. The product is for indoor use only. Direct sunlight or exposed locations can destroy the infrared sensor of the product.
6. Low voltage indication: The battery needs to be replaced, if the LED light blinks continuously while the dispenser is on standby mode.
7. This product is not waterproof. Please place the product far from dampness

### IF DISPENSER DOESN'T WORK

1. Check the battery to determine if the power is used up or it is not at the right polarity.
2. Power switch not open.

### IF NO SOAP COMES OUT OF THE DISPENSER

1. You must operate the dispenser several times when using it for the first time.
2. The liquid can get congealed and block the nozzle. You will need to fill in some warm water, (about 60°C.), and then operate it after several minutes.
3. Check if there is liquid soap in the dispenser.

### CLEANING

1. If there is dust in the container, please clean the container, and then refill the liquid.
2. Do not use water to wash the dispenser, clean the surface with wet towel; use dry towel to clean the battery compartment.
3. If not using, please fill in some water, and operate dispenser several times to clean the output pipe and take the battery out.