

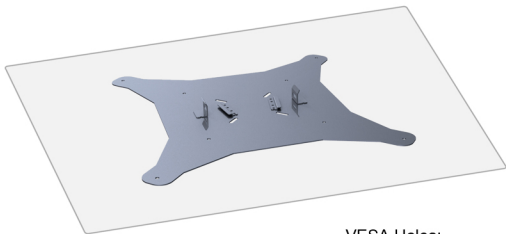
TV/All in One PC VESA Stand Install Guide



1: Install the base onto the stand.



2: Install the bracket onto TV&All in one pc (Up to 60 inch).



Up to 60' TV & All in One PC

VESA Holes:

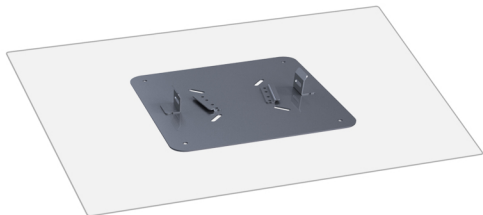
75mm×75mm

100mm×100mm

200mm×200mm

400mm×400mm

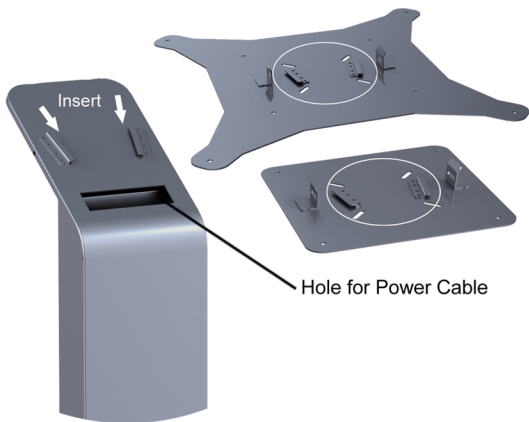
3: Install the bracket onto TV&All in one pc (Up to 32 inch).



Up to 32' TV & All in One PC

VESA Holes:
75mm×75mm
100mm×100mm
200mm×200mm

4: Please insert the bracket to stand after installed it onto TV/All in one pc and put power cable into the hole.



5: TV/All in one pc on the stand.



6: Connect the adapter onto the power bar, take out the main cable of the power bar.
Close the back door and lock it.



7: Install screw into the limited hole for locking the bracket.

