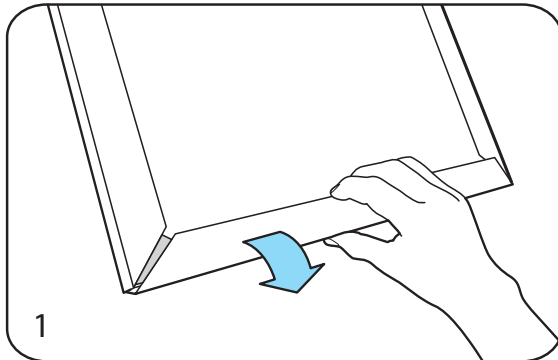


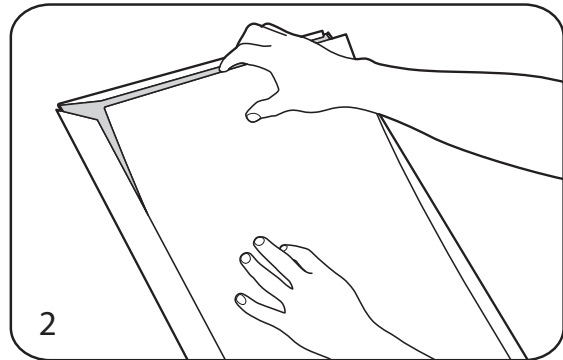
**WARNING:** Always ensure power is OFF during all maintenance procedures  
All lightboxes MUST be securely fastened to wall or other surface  
Unless otherwise stated all models are strictly INTERIOR use only

### Graphic Replacement Procedure

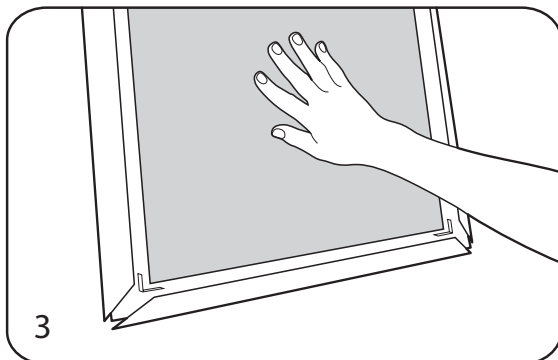
Lightboxes generate heat during normal operation. Appropriate care should be taken during the placement and removal of graphics \*



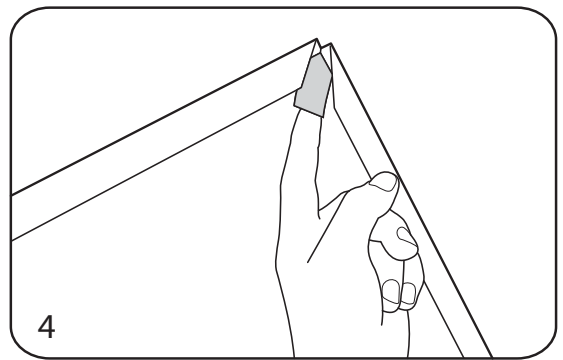
1 Using fingers pull on the image frame until it springs open



2 Open all sides of the frame and remove acrylic face panel



3 Remove the old graphics and centre the new image



4 Replace acrylic face ensuring it is beneath the dampners

5. Finally, snap shut all four sides of the lightbox's aluminium frame

### Cleaning

1. The face of the lightbox should be wiped with a damp cloth. A small amount of thinners can be used to remove any grease present, before a final clean using a non-streak cleaning fluid.
2. Dust may be attracted to the lightbox due to static electricity, this can be removed using Reiniger + Pfleger Kunst Stoff, available from Slimline Warehouse
3. Graffiti should be removed using a solvent based product, care being taken to avoid any mechanical abrasion.

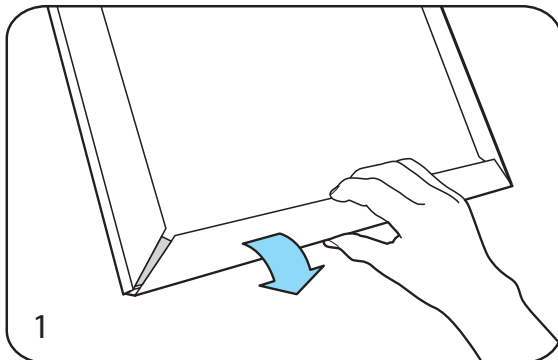
# YGQ Ciplight

## Installation and Maintenance Instructions

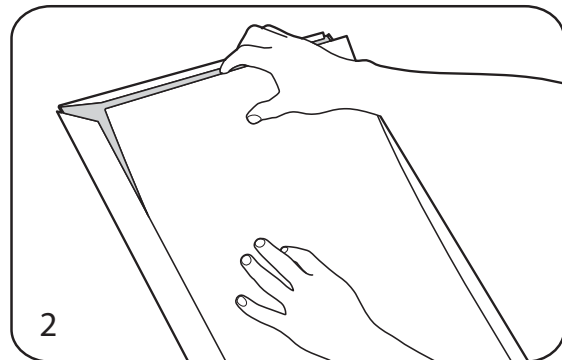
**WARNING:** Always ensure power is OFF during all maintenance procedures  
All lightboxes **MUST** be securely fastened to wall or other surface  
Unless otherwise stated all models are strictly **INTERIOR** use only

### Graphic Replacement Procedure

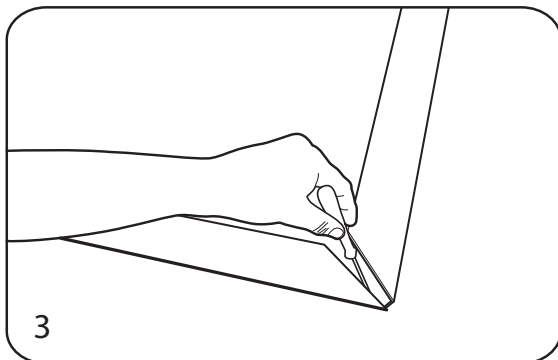
Lightboxes generate heat during normal operation. Appropriate care should be taken during the placement and removal of graphics \*



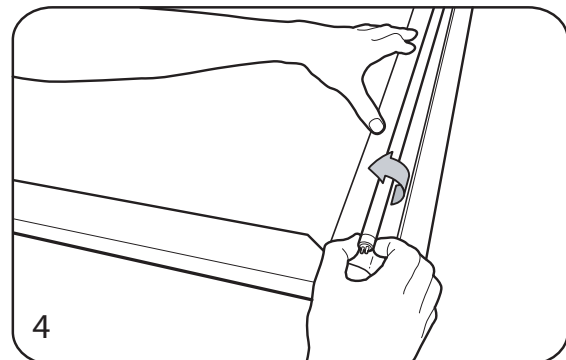
1 Using fingers pull on the image frame until it springs open



2 Open all sides of the frame and remove acrylic face panel



3 Loosen the screw on the fluorescent tube bracket



4 Hold diffusion sheet and twist fluorescent tube to release