

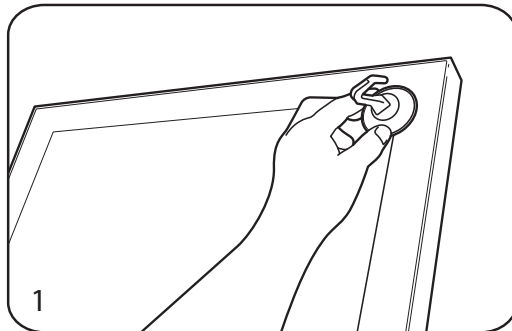
SDB Retail Lumi

Installation and Maintenance Instructions

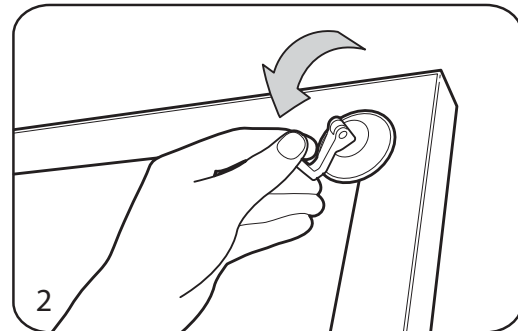
WARNING: Always ensure power is OFF during all maintenance procedures
All lightboxes MUST be securely fastened to wall or other surface
Unless otherwise stated all models are strictly INTERIOR use only

Graphic Replacement Procedure

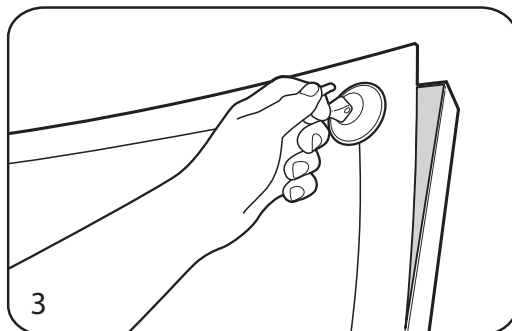
Lightboxes generate heat during normal operation. Appropriate care should be taken during the placement and removal of graphics *



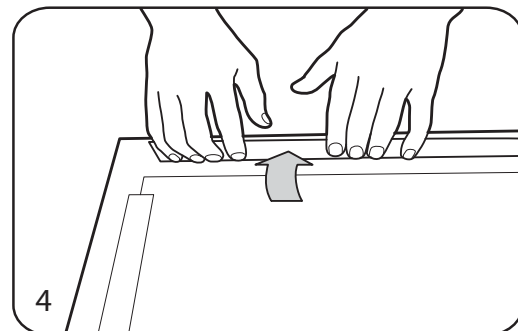
1 Place access suction cup on top corner of the front panel



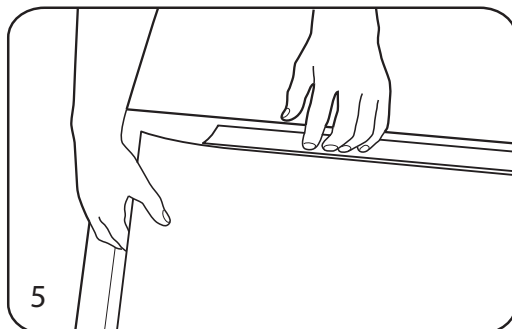
2 Lock suction cup by pushing firmly down on the handle



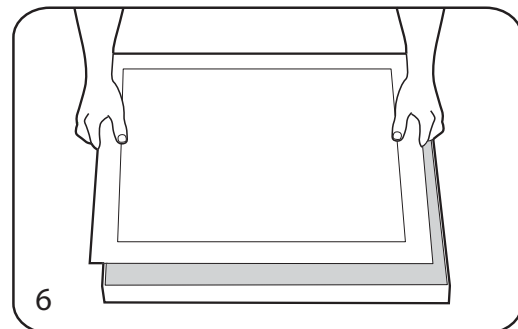
3 Carefully lift off the acrylic panel by pulling the suction cup



4 Lay panel face down and fold back the magnetic strips



5 Remove old graphic then insert and centre the new graphic



6 Refit the acrylic panel ensuring it sits securely in the frame

WARNING: Failure to correctly refit the acrylic face (step 6) may result in damage or injury

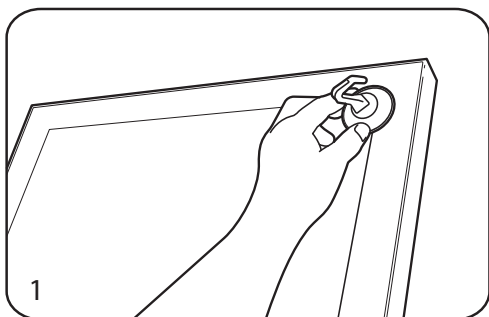
Cleaning

1. The face of the lightbox should be wiped with a damp cloth. A small amount of thinners can be used to remove any grease present, before a final clean using a non-streak cleaning fluid.
2. Dust may be attracted to the lightbox due to static electricity, this can be removed using Reiniger + Pfleger: Kunst Stoff, available from Slimline Warehouse
3. Graffiti should be removed using a solvent based product, care being taken to avoid any mechanical abrasion.

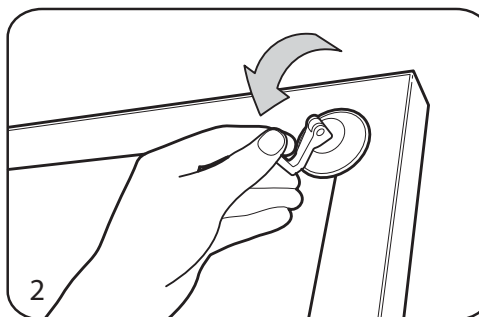
WARNING: Always ensure power is OFF during all maintenance procedures
All lightboxes MUST be securely fastened to wall or other surface
Unless otherwise stated all models are strictly INTERIOR use only

Flourescent Lamp Replacement Procedure

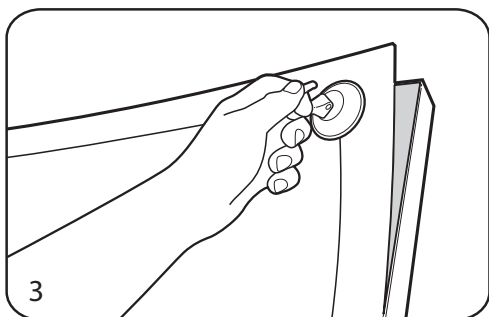
Installation and Maintenance of all lightboxes must be undertaken by a qualified electrician *
It is advised that failed lamps be promptly replaced in order to avoid damage to the units electrical components.



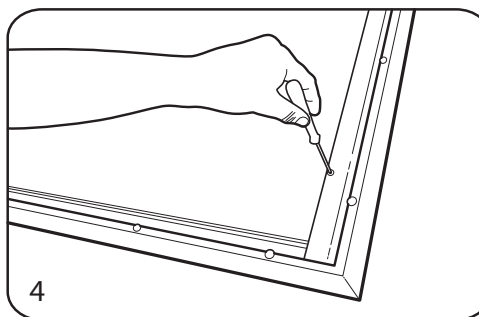
1 Place access suction cup on top corner of the front panel



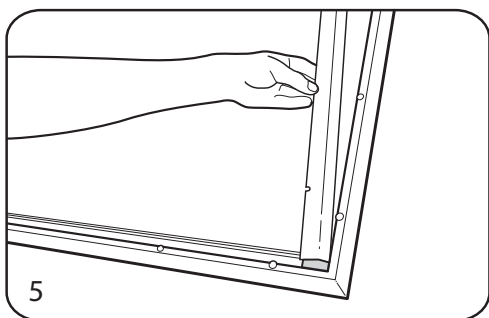
2 Lock suction cup by pushing firmly down on the handle



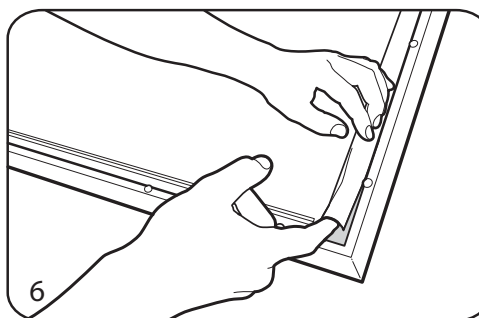
3 Carefully lift off the acrylic panel by pulling the suction cup



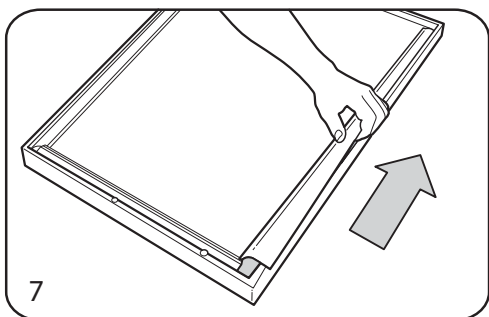
4 Unscrew top and bottom of the aluminium protection cover



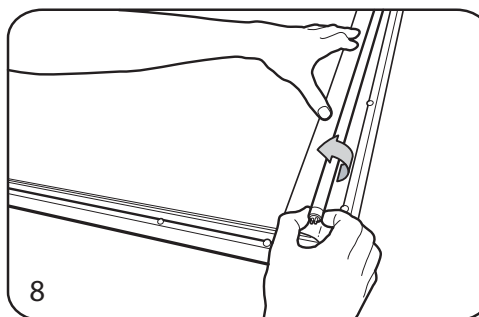
5 Once loose carefully remove aluminium protection cover



6 Using fingers lift the bottom corner of plastic diffusion sheet



7 Fully untuck diffusion sheet by running fingers beneath it



8 Hold diffusion sheet and twist flourescent tube to release