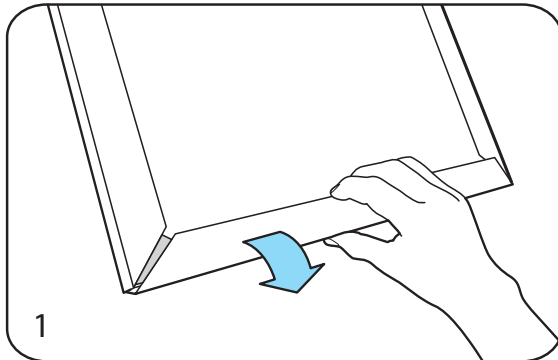


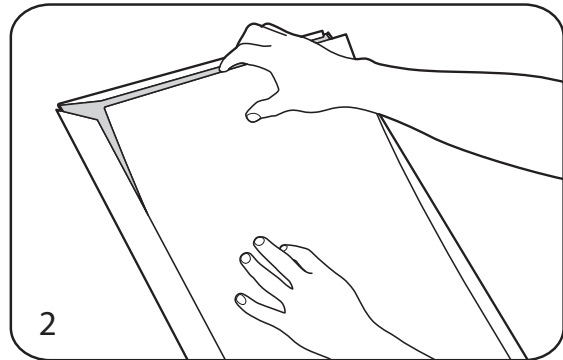
WARNING: Always ensure power is OFF during all maintenance procedures
All lightboxes MUST be securely fastened to wall or other surface
Unless otherwise stated all models are strictly INTERIOR use only

Graphic Replacement Procedure

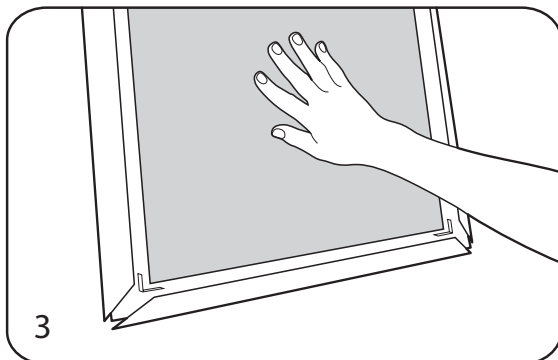
Lightboxes generate heat during normal operation. Appropriate care should be taken during the placement and removal of graphics *



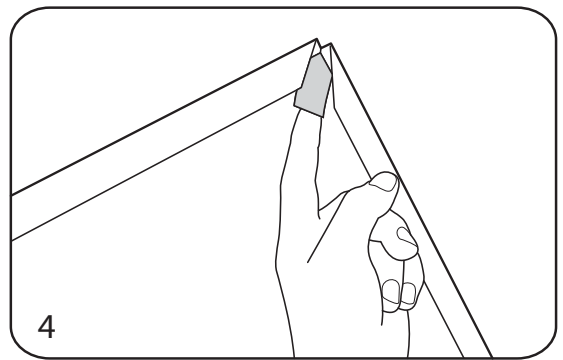
1 Using fingers pull on the image frame until it springs open



2 Open all sides of the frame and remove acrylic face panel



3 Remove the old graphics and centre the new image



4 Replace acrylic face ensuring it is beneath the dampners

5. Finally, snap shut all four sides of the lightbox's aluminium frame

Cleaning

1. The face of the lightbox should be wiped with a damp cloth. A small amount of thinners can be used to remove any grease present, before a final clean using a non-streak cleaning fluid.
2. Dust may be attracted to the lightbox due to static electricity, this can be removed using Reiniger + Pfleger Kunst Stoff, available from Slimline Warehouse
3. Graffiti should be removed using a solvent based product, care being taken to avoid any mechanical abrasion.

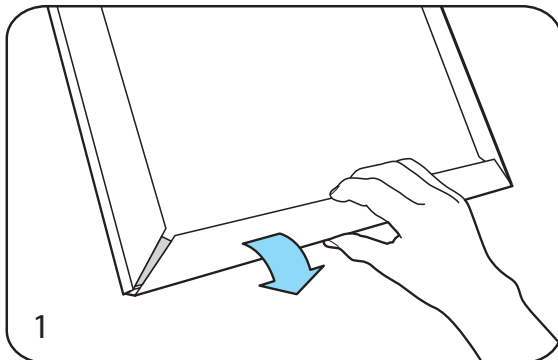
FDT Eccolight

Installation and Maintenance Instructions

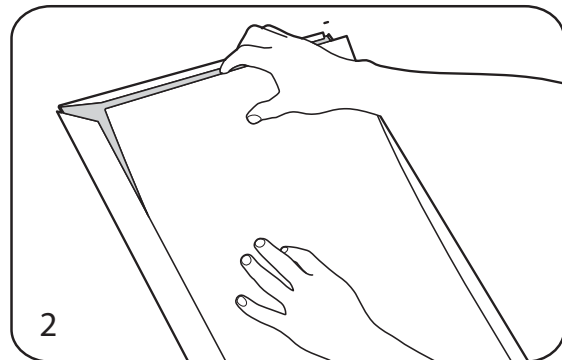
WARNING: Always ensure power is OFF during all maintenance procedures
All lightboxes MUST be securely fastened to wall or other surface
Unless otherwise stated all models are strictly INTERIOR use only

Tube Replacement Procedure

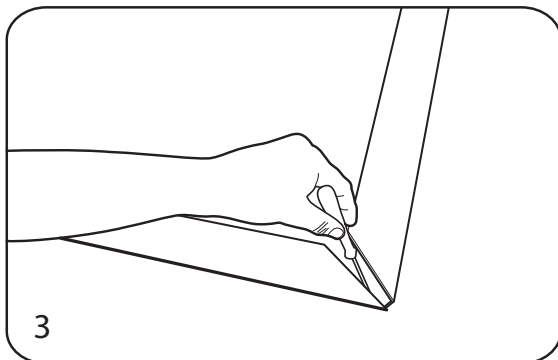
Lightboxes generate heat during normal operation. Appropriate care should be taken during the placement and removal of graphics *



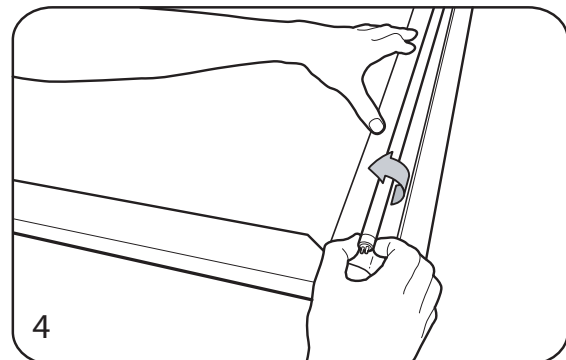
1 Using fingers pull on the image frame until it springs open



2 Open all sides of the frame and remove acrylic face panel



3 Loosen the screw on the fluorescent tube bracket



4 Hold diffusion sheet and twist fluorescent tube to release